

DO NOT SCALE FROM THIS PRINT

DESIGNED & DIMENSIONED IN MILLIMETERS [INCHES]

**BNC7T-J-P-XX-ST-TH2D**  
 GENDER -J: JACK  
 TYPE -P: PCB  
 TERMINATION -TH2D: DIE CAST THROUGH HOLE  
 ORIENTATION -ST: STRAIGHT

PLATING SPECIFICATION  
 -HN: HEAVY GOLD/NICKEL (SEE NOTES 6 & 7)  
 (BNC7T-J-P-DN-ST-TH2-BDY-D)  
 (BNC7T-J-P-ST-TH2-INS)  
 (BNC7T-J-P-HN-ST-TH2-2PC-SKT)  
 -GN: HEAVY GOLD/NICKEL (SEE NOTES 6 & 7)  
 (BNC7T-J-P-DN-ST-TH2-BDY-D)  
 (BNC7T-J-P-ST-TH2-INS)  
 (BNC7T-J-P-GN-ST-TH2-2PC-SKT)

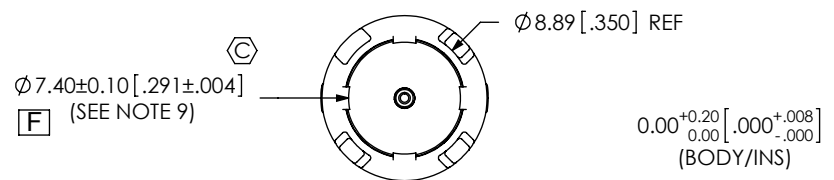
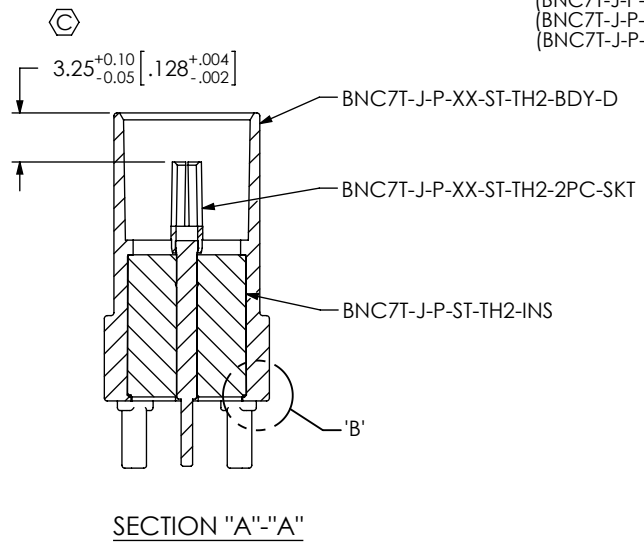
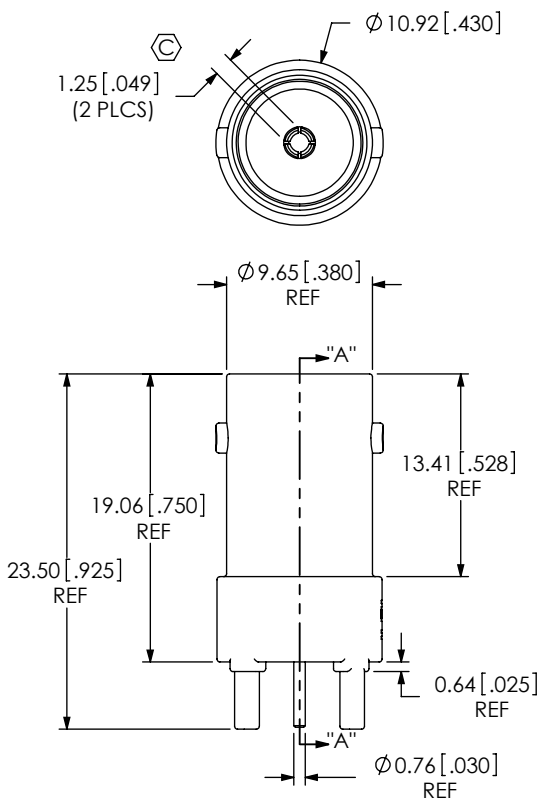

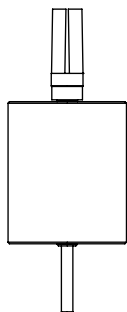


FIG 1  
BNC7T-J-P-XX-ST-TH2D SHOWN

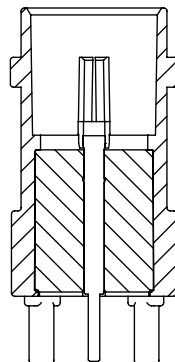
- NOTES:
1. (C) REPRESENTS A CRITICAL DIMENSION.
  2. PUSHOUT FORCE FOR CENTER CONTACT: 26.69 N [6.0 LB] MIN.
  3. PUSHOUT FORCE FOR INSULATOR: 53.38 N [12.0 LB] MIN.
  4. SEE CO-HD-WI-3040-M RF PACKAGING STANDARD FOR PACKAGING INSTRUCTIONS.  
PRODUCT TO BE PACKAGED IN TRAY TY-BNC001-1 WITH COVER TY-SMA001-2.
  5. ROHS COMPLIANT.
  6. PLATING: -H: .000030" MIN GOLD OVER .000050" MIN. NICKEL.  
-G: .000010" MIN GOLD OVER .000050" MIN. NICKEL.  
-N: .000100" MIN NICKEL.
  7. ASSEMBLY PLATING DESIGNATIONS:  
-HN: (CENTER CONTACT)-H  
(OUTER CONTACT)-N  
-GN: (CENTER CONTACT)-G  
(OUTER CONTACT)-N
  8. NOTE DELETED.
  9. 0.10 [.004] BURR ALLOWED IN SPECIFIED AREA ONLY.

DETAIL 'B'  
SCALE 4 : 1

UNLESS OTHERWISE SPECIFIED DIMENSIONS ARE IN MILLIMETERS [INCHES] TOLERANCES ARE: DECIMALS ANGLES .X: ±0.3 [01] 2° .XX: ±0.13 [.005] .XXX: ±0.051 [.0020]	PROPRIETARY NOTE THIS DOCUMENT CONTAINS INFORMATION CONFIDENTIAL AND PROPRIETARY TO SAMTEC, INC. AND SHALL NOT BE REPRODUCED OR TRANSFERRED TO OTHER DOCUMENTS OR DISCLOSED TO OTHERS OR USED FOR ANY PURPOSE OTHER THAN THAT WHICH IT WAS OBTAINED WITHOUT THE EXPRESSED WRITTEN CONSENT OF SAMTEC, INC.	 520 PARK EAST BLVD, NEW ALBANY, IN 47150 PHONE: 812-944-6733 FAX: 812-948-5047 e-Mail: info@SAMTEC.com code 55322
MATERIAL: SHELL: ZINC CONTACT: COPPER ALLOY DIELECTRIC: PTFE	DO NOT SCALE DRAWING SHEET SCALE: 2:1	DESCRIPTION: TRUE 75OHM BNC ELEVATED STRAIGHT JACK DWG. NO. <b>BNC7T-J-P-XX-ST-TH2D</b> BY: D. PARMAR 10/21/2009 SHEET 1 OF 2



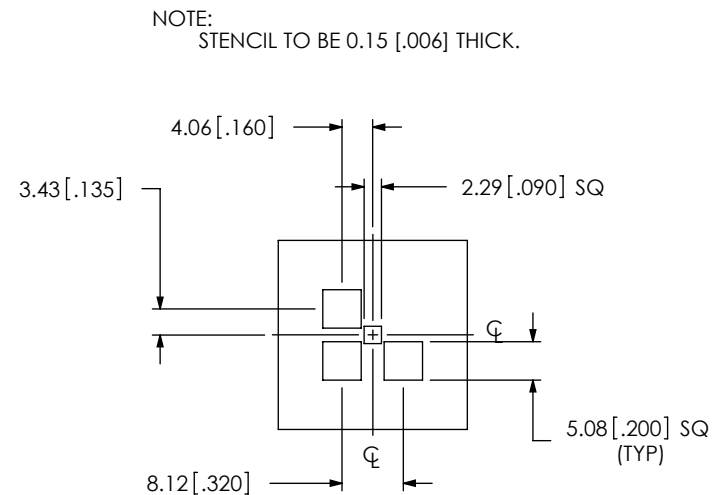
IN-PROCESS 1  
INSERT CONTACT INTO INSULATOR



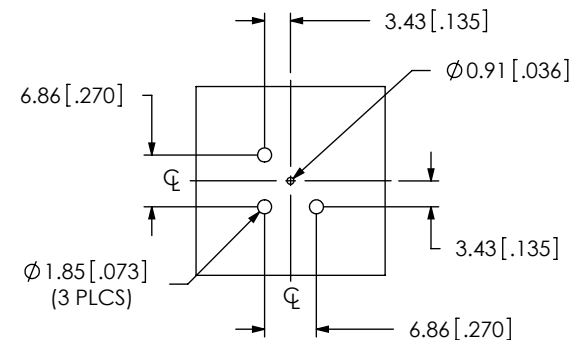
IN-PROCESS 2  
INSERT INSULATOR INTO BODY  
& SWAGE RETENTION TABS

**CRITICAL DIMENSION INSPECTION INSTRUCTION TABLE**

ASSEMBLY OPERATION	START-UP INSPECTION INSPECT CODE A	IN-PROCESS INSPECTION INSPECT CODE B
INSERT PINS		C1
INSERT INSULATORS		C2, C3



RECOMMENDED STENCIL LAYOUT



RECOMMENDED PCB LAYOUT

**PROPRIETARY NOTE**

THIS DOCUMENT CONTAINS INFORMATION  
CONFIDENTIAL AND PROPRIETARY TO  
SAMTEC, INC. AND SHALL NOT BE REPRODUCED  
OR TRANSFERRED TO OTHER DOCUMENTS OR  
DISCLOSED TO OTHERS OR USED FOR ANY  
PURPOSE OTHER THAN THAT WHICH IT WAS  
OBTAINED WITHOUT THE EXPRESSED WRITTEN  
CONSENT OF SAMTEC, INC.



520 PARK EAST BLVD. NEW ALBANY, IN 47150  
PHONE: 812-944-6733 FAX: 812-948-5047  
e-Mail info@SAMTEC.com code 55322

SHEET SCALE: 2:1

DESCRIPTION:  
TRUE 75OHM BNC ELEVATED STRAIGHT JACK

DWG. NO.  
BNC7T-J-P-XX-ST-TH2D

BY: D. PARMAR 10/21/2009 SHEET 2 OF 2