



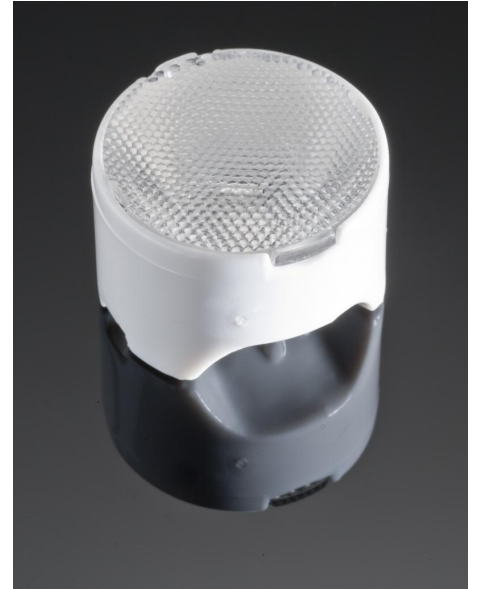
# PRODUCT DATASHEET

## Leila series

last update 14/2/2014

### DETAILS

<b>Product Number</b>	FCN10783_LE1-M
<b>Family</b>	Leila
<b>Type</b>	Pack
<b>Color</b>	white
<b>Diameter</b>	21,6 mm
<b>Height</b>	15,1 mm
<b>Style</b>	round
<b>Optic Material</b>	PMMA
<b>Holder Material</b>	
<b>Fastening</b>	glue
<b>Status</b>	production ready
<b>ROHS Compliant</b>	Yes
<b>Date Updated</b>	14/02/2014



### OPTICAL PROPERTIES

LED	Viewing Angle	Light Beam	Efficiency	cd/lm	Connector
LZ1 (00xW00)	24 deg	Medium	91 %	-	-

**NOTE: The typical divergence will be changed by different color, chip size and chip position tolerance. The typical total divergence is the full angle measured where the luminous intensity is half of the peak value.**