

20 19 18 17 16 15 14 13 12 11 9 8 7 6 5 4 3 2 1

M

L

K

J

I

H

G

F

E

D

C

B

A

M

L

K

J

I

H

G

F

E

D

C

B

A

VIEW ON MATING SIDE



A = 64 STANDARD CONTACTS L = 2.9

MARKING	STANDARD
PERFORMANCE LEVEL	G2/0 = CONTACT AREA PERFORM. LEVEL 2 / TERMINATION TIN
FLUX PROOF	NO
FIXING CLIP	NO
DIMENSIONS	SD-85013-0001 SHT 1

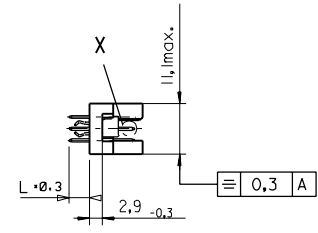
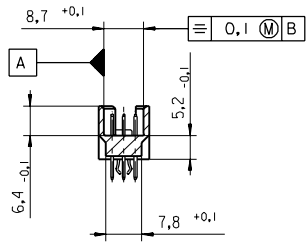
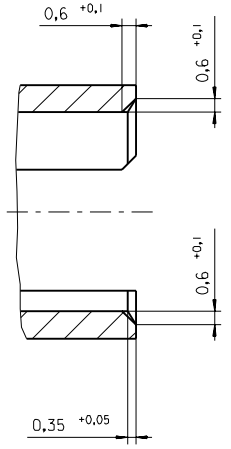
A	G2/0	a1-32	c1-32
CONTACT SYMBOL	PERFORMANCE LEVEL	CONTACT POSITION NUMBER	

EC NO. I 2004-XXXX DRAWN N.S. 31/03/04 CHKd G.L. 31/03/04 APPR G.L. 31/03/04	QUALITY SYMBOLS MAJOR CRITICAL	GENERAL TOLERANCES: (UNLESS SPECIFIED)		SCALE	DESIGN UNITS	THIRD ANGLE PROJECTION	DIMENSIONS: <input type="checkbox"/> MM <input type="checkbox"/> INCH <input type="checkbox"/> INCH ONLY	SHT	REV	
		4 PLACES	±0.	±.	INCH					INCH
		3 PLACES	±0.	±.						
		2 PLACES	±0.	±.						
1 PLACE	±0.	±.								
DRAWN BY & DATE			N.S. 20/04/01		TITLE: 96 POS MALE CONNECTOR					
CHECKED BY & DATE			G.L. 20/04/01		ACCORDING DIN 41612 STYLE R					
APPROVED BY & DATE			G.L. 20/04/01		CONTACTS ARRANGEMENT					
CAD FILENAME			S850131938.S01		MATERIAL NO.		SD-85013-1938		SHEET NO.	
DRAWING NO.			85013-1938		DRAWING NO.		SD-85013-1938		1 OF 1	
DRAFT WHERE APPLICABLE MUST REMAIN WITHIN DIMENSIONS			THIS DRAWING CONTAINS INFORMATION THAT IS PROPRIETARY TO MOLEX INCORPORATED AND SHOULD NOT BE USED WITHOUT WRITTEN PERMISSION.							

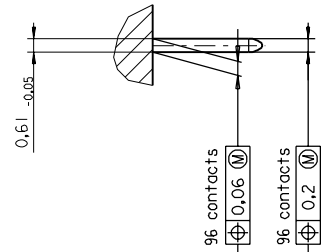
19 18 17 16 15 14 13 12 11 10 9 8 7 6 5 4 3 2 1

PART NO.  
DWG. NO.

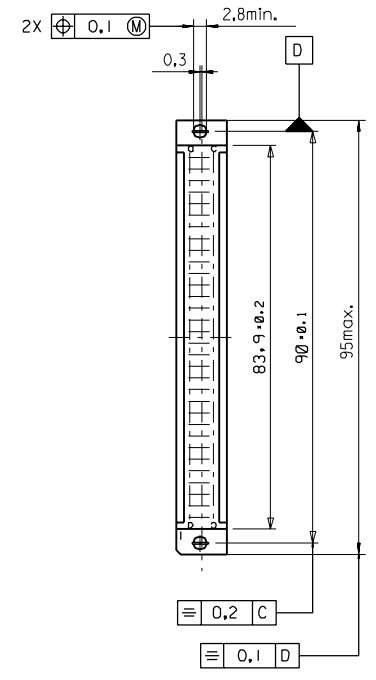
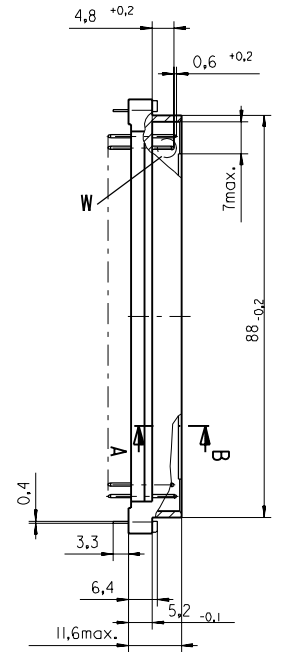
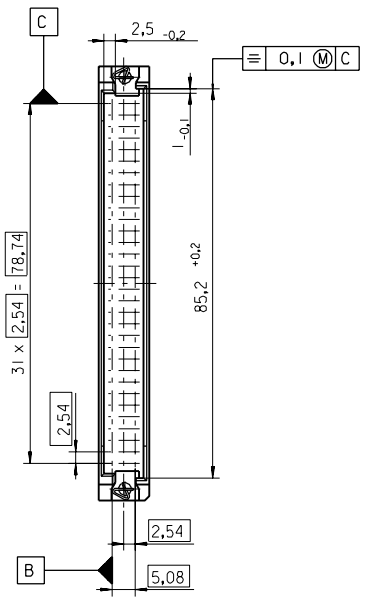
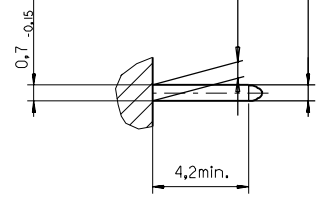
Section A - B  
5:1



View X  
5:1



View W  
5:1



FIRST ANGLE PROJECTION		REVISE ONLY ON CAD SYSTEM		SH.	REV.
UNLESS OTHERWISE SPECIFIED TOLERANCES: ANGULAR ±2°	INCH	DRWG BY	SIGN	CAD/CAM PROJECT NAME	
	METRIC	Ca		85013000 611	
3 PLACE ± . . ±		CHK'D BY	SIGN	TITLE	
2 PLACE ± . ±		KN		96 pos. Male connector acc. DIN 41612 Style R Dimensions	
1 PLACE ± . ±		APP'D BY	SIGN	SHEET NO. DATE	
DRAFT WHERE APPLICABLE MUST REMAIN WITHIN DIMENSIONS				1 OF 95/06/07	
DESIGN DIMENSION <input checked="" type="checkbox"/> MM		SCALE		MOLEX EUROPE	
EQUIVALENT DIMENSION <input type="checkbox"/> MM		! : 1		PART NO. DWG NO.	
IF TWO DIMENSIONS ARE SHOWN THE UPPER IS THE DESIGN DIMENSION, LOWER IS SECONDARY				SDA-85013-0001	
				SIZE B	

VIEW ON MATING SIDE

∩	A	A	A	A	A	A	A	A	A	A	A	A	A	A	A	A	A	A	A	A	A	A	A	A	A	A	A	A	A
∩																													
∩	A	A	A	A	A	A	A	A	A	A	A	A	A	A	A	A	A	A	A	A	A	A	A	A	A	A	A	A	A

1 2 3 4 5 6 7 8 9 10 11 12 13 14 15 16 17 18 19 20 21 22 23 24 25 26 27 28 29 30 31 32 33 34 35 36 37 38 39 40 41 42 43 44 45 46 47 48 49 50 51 52 53 54 55 56 57 58 59 60 61 62 63 64

A = 64 STANDARD CONTACTS L-2,9

Marking	Standard
Performance level	G2/0 = Contact area perform. level2 / Termination tin
Flux proof	no
Fixing clip	no
Dimensions	SDA-85013-0001 sht.1
Technical Data	PS-85013-0001

A	G2/0	a1-32	c1-32
Contact symbol	Perform. level	Contact position number	

first release see ECN No. 1868	REVISIONS			FOR PREVIOUS REVISIONS SEE MRI LIST		
	UNLESS OTHERWISE SPECIFIED TOLERANCES: ANGULAR $\pm 2'$		DRWG BY	SIGN	CAD/CAM PROJECT NAME	
	INCH METRIC		Cc		s8501319	
3 PLACE $\pm$ .	$\pm$	CHK'D BY	SIGN	MOLEX INC. & SHOULD NOT BE USED WITHOUT WRITTEN PERMISSION		
2 PLACE $\pm$ .	$\pm$	KN		TITLE		
1 PLACE $\pm$ .	$\pm$	APPD BY	SIGN	96 pos. Male connector acc. DIN 41612 style R contacts arrangement		
DRAFT WHERE APPLICABLE MUST REMAIN WITHIN DIMENSIONS			SCALE			
DESIGN DIMENSION <input type="checkbox"/> MM <input type="checkbox"/> IN.		PART NO.				
EQUIVALENT DIMENSION <input type="checkbox"/> MM <input type="checkbox"/> IN.		DWG NO.				
IF TWO DIMENSIONS ARE SHOWN, THE UPPER IS THE DESIGN DIMENSION, LOWER IS SECONDARY		SDA-85013-1938				
LTR				SHEET NO.		DATE
				1 OF 1		95/06/06
				MOLEX EUROPE		SIZE
				85013-1938		SDA-85013-1938
						A