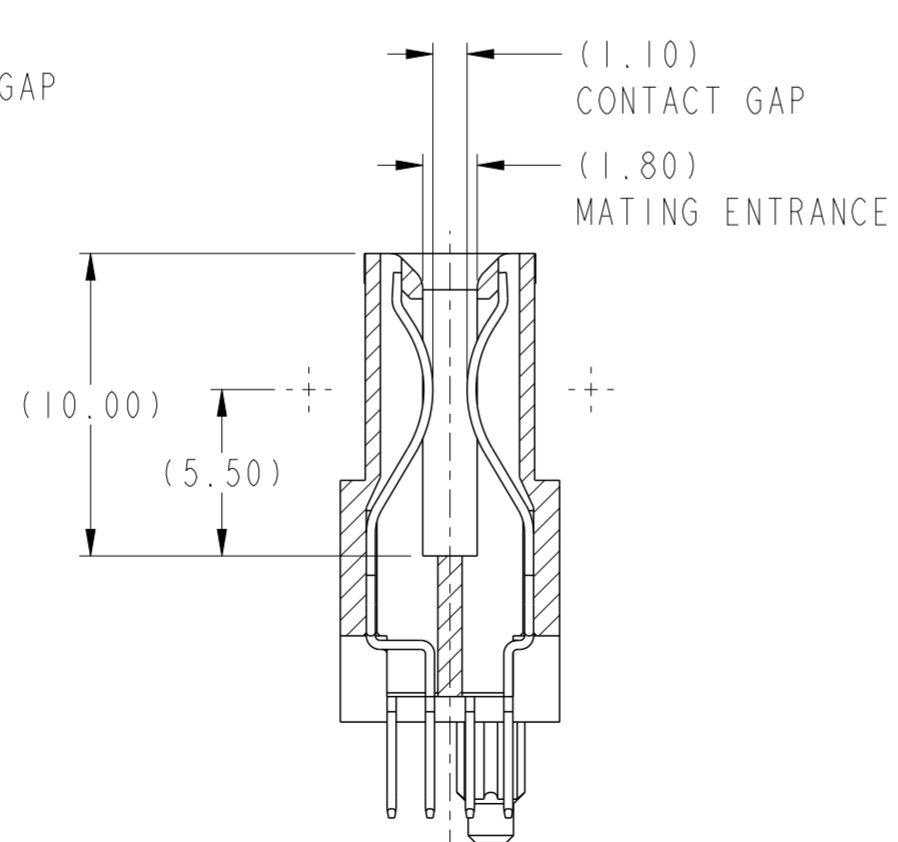


SECTION C-C



SECTION D-D

rev	ecn no	dr	date
A	-	HZ	2012-01-02
-	-	-	-
-	-	-	-
-	-	-	-
-	-	-	-
-	-	-	-

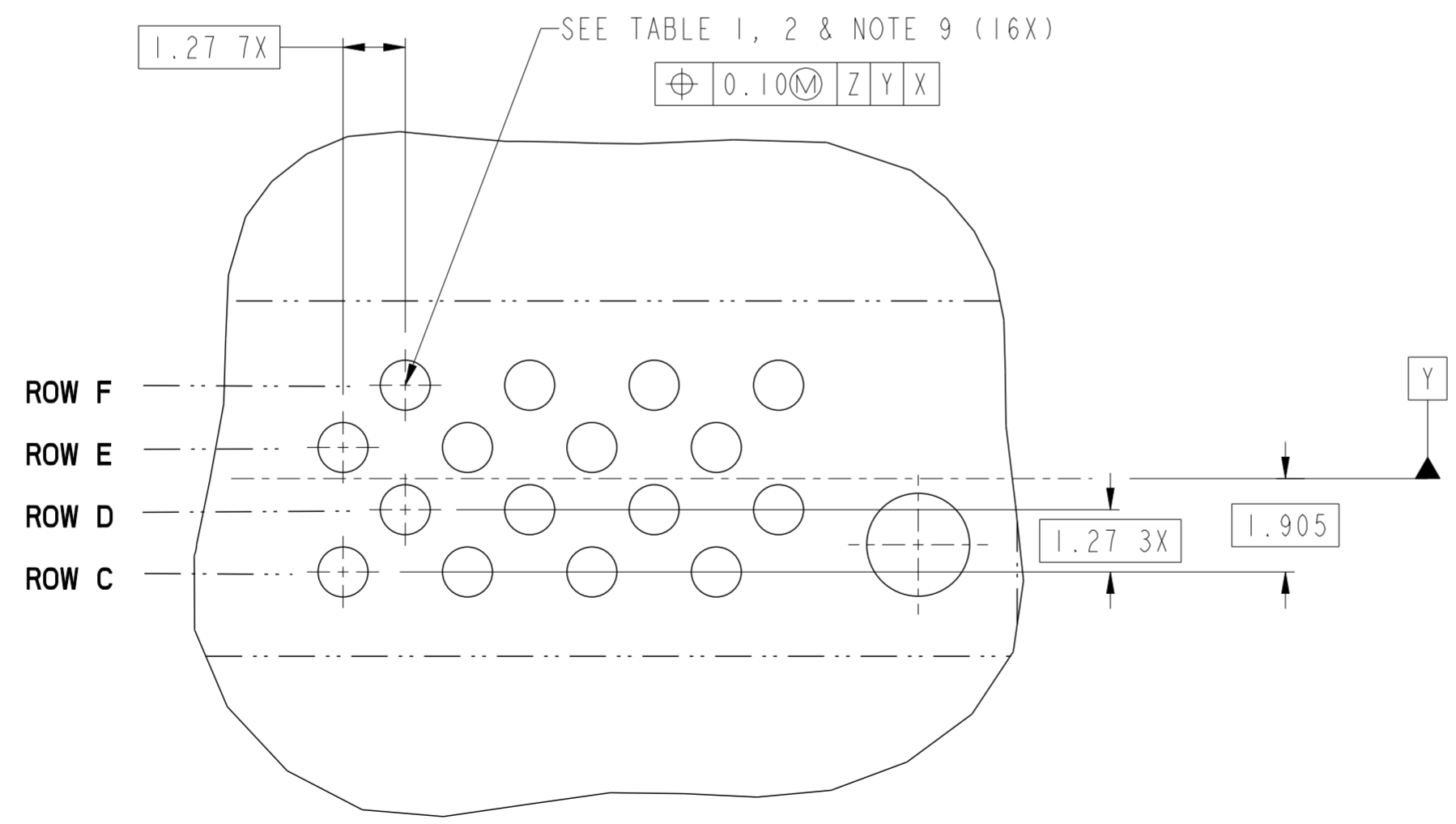
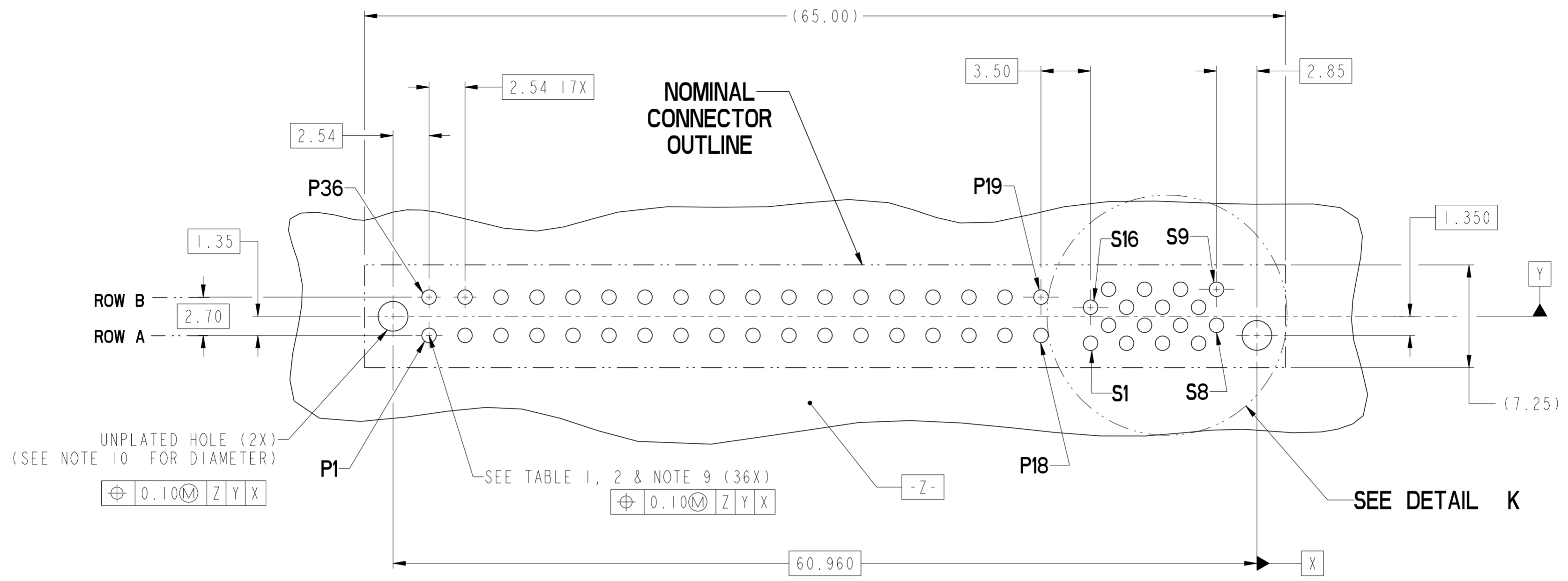
spec ref	-	dr	Wei-Long Zhang	2011/2/02	projection	MM	size	A2	scale	4:1	
tolerance std	ASME Y14.5	eng	Wei-Long Zhang	2012/01/03			ecn no	-	rel level	Released	
TOLERANCES UNLESS OTHERWISE SPECIFIED		chr	-	product family							CARD EDGE
surface	ASME Y14.5	appr	Pai-Ming Zheng	2012/01/04	title	VERT RECT (36P-16S) HIGH POWER CARD EDGE		dwg no	10119601	rev	A
linear	0.X ±0.3 0.XX ±0.10 0.XXX ±0.050	www.fci.com	cat. no.	-	Product - Customer Drw	sheet 1 of 4					
angular	0° ±2°										

PDS: Rev :A

STATUS:Released

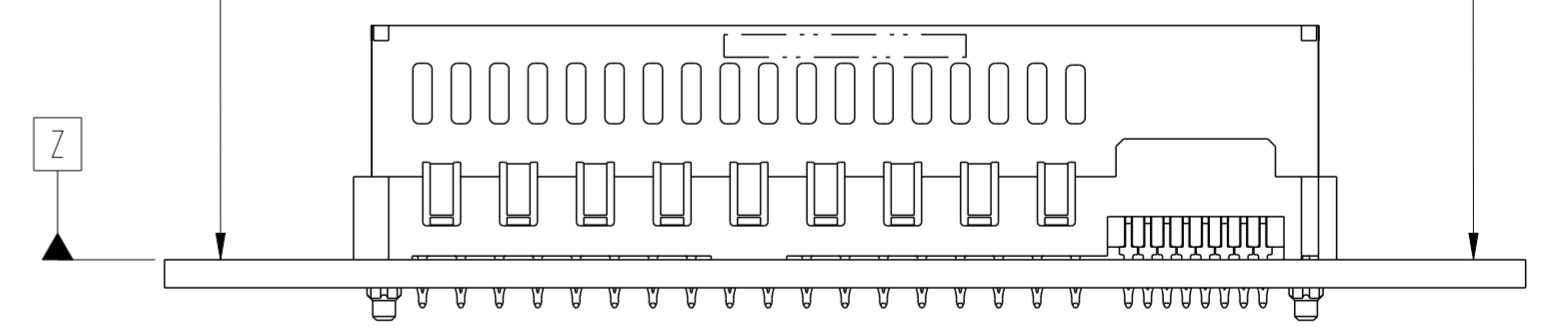
Printed: Jan 04, 2012

Copyright FCI. FCI



DETAIL K
SCALE 8:1

RECOMMENDED PCB LAYOUT
VIEWED FROM CONNECTOR SIDE



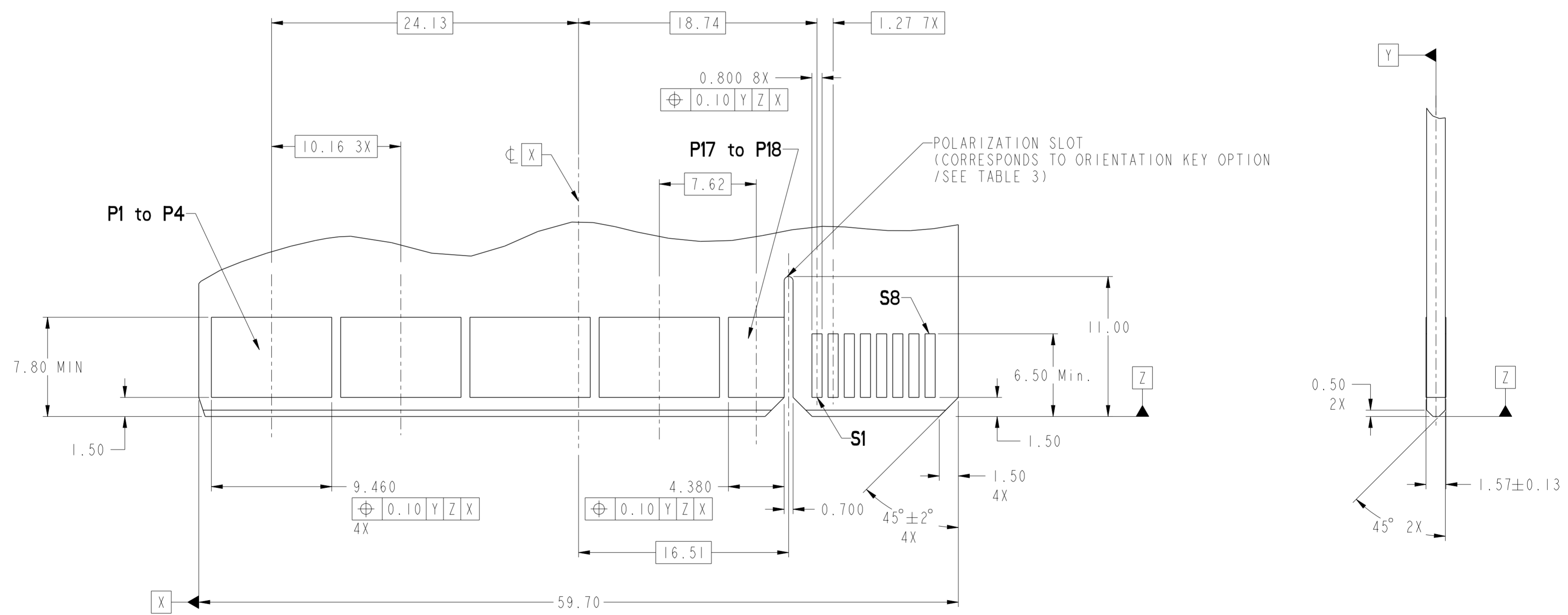
dr	Wei-Long Zhang	2011/12/02	projection	MM	size	A2	scale	4:1
eng	Wei-Long Zhang	2012/01/03			ecn no	-	rel level	Released
chr	-	-			product family	CARD EDGE		
appr	Pai-Ming Zheng	2012/01/04			cat. no.	-	Product - Customer Drw	sheet 2 of 4
title VERT RECT (36P-16S) HIGH POWER CARD EDGE			dwg no 10119601		rev A			

TABLE 1 (HPCE / SOLDER TAILS)
PLATED THROUGH-HOLE REQUIREMENTS

CONTACT TYPE	TOP LAYER DESCRIPTION	DRILLED HOLE DIAMETER	COPPER THICKNESS	TIN-LEAD THICKNESS	TIN THICKNESS	FINISHED HOLE DIAMETER
		TIN-LEAD	1.10-1.16 (1.15 DRILL)	0.025 - 0.050	0.005 - 0.015	--
POWER & SIGNAL	IMMERSION TIN	1.10-1.16 (1.15 DRILL)	0.025 - 0.050	--	0.9 - 1.5um	0.94 - 1.10
	COPPER (SEE NOTE 8)	1.10-1.16 (1.15 DRILL)	0.025 - 0.050	--	--	0.94 - 1.10

TABLE 2 (HPCE / PRESS-FIT TAILS)
PLATED THROUGH-HOLE REQUIREMENTS

CONTACT TYPE	TOP LAYER DESCRIPTION	DRILLED HOLE DIAMETER	COPPER THICKNESS	TIN-LEAD THICKNESS	TIN THICKNESS	FINISHED HOLE DIAMETER
		TIN-LEAD	0.81-0.86 (0.85 DRILL)	0.025 - 0.050	0.005 - 0.015	--
POWER & SIGNAL	IMMERSION TIN	0.81-0.86 (0.85 DRILL)	0.025 - 0.050	--	0.9 - 1.5um	0.70 - 0.80
	COPPER (SEE NOTE 8)	0.81-0.86 (0.85 DRILL)	0.025 - 0.050	--	--	0.70 - 0.80

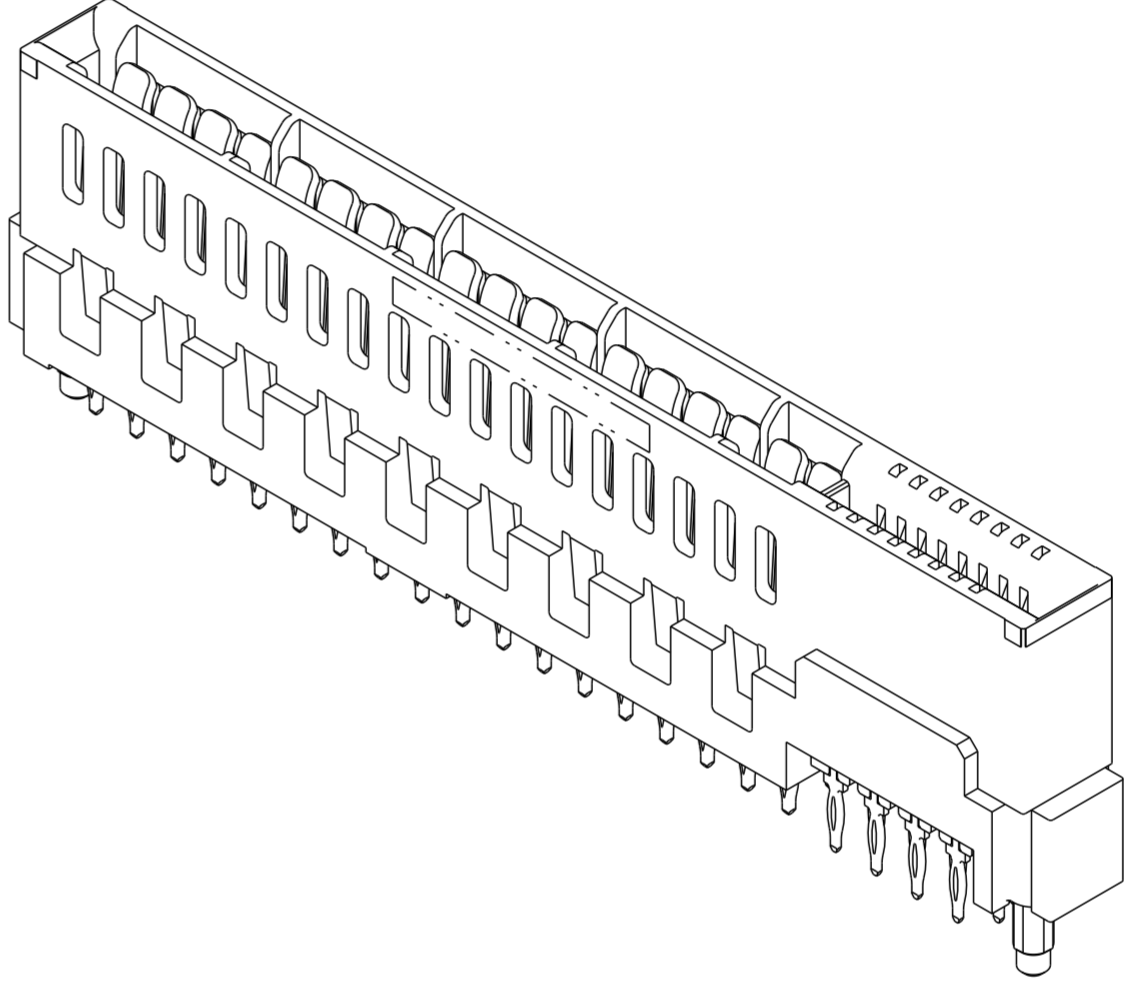


RECOMMENDED MATING BOARD
FOOTPRINT

dr	Wei-Long Zhang	2011/12/02	projection	MM	size	A2	scale	4:1
eng	Wei-Long Zhang	2012/01/03		MM	ecn no	-	rel level	Released
chr	-	-						
appr	Pei-Ming Zheng	2012/01/04	product family	CARD EDGE	rel level	Released		
		title VERT RECT (36P-16S) HIGH POWER CARD EDGE			dwg no 10119601	rev A		
www.fci.com		cat. no.	Product - Customer Drw			sheet 3 of 4		

HPCE PART NUMBER (TABLE 3)

PART NUMBER	TAIL TYPE	ORIENTATION KEY	DIM "A" TYPICAL TAIL LENGTH	DIM "B" RECOMMENDED BOARD THICKNESS
10119601-001LF	SOLDER	YES	3.17 ±0.25	1.59 - 2.38
10119601-002LF	SOLDER	NO		
10119601-003LF	PRESS-FIT	YES	3.17 ±0.25	1.57 MIN
10119601-004LF	PRESS-FIT	NO		



NOTES:

1. CONNECTOR MATERIALS:
 HOUSING: HIGH TEMPERATURE THERMAL PLASTIC, BLACK
 UL 94V-0 COMPLIANT
 CONTACTS: HIGH PERFORMANCE COPPER ALLOY.
2. CONTACT FINISH REF. GS-12-604 SECTION 5.2.
3. PRODUCT SPECIFICATION: GS-12-604.
4. APPLICATION SPECIFICATION: GS-20-128.
5. PRODUCT MARKING (FCI - PART NUMBER & DATE CODE) ON HOUSING IN AREA SHOWN.
6. PACKAGING MEETS FCI SPECIFICATION GS-14-937.
7. HOUSING COMPONENT WILL WITHSTAND EXPOSURE TO 260°C PEAK TEMPERATURE FOR 60 SECONDS IN A CONVECTION, INFRA-RED, OR VAPOR PHASE REFLOW OVEN.
8. COPPER PLATING THICKNESS IN CENTER OF VIA-HOLE CAN BE NO MORE THAN 0.003 LESS THAN OTHER AREAS.
9. ALL HOLE SIZES ARE FINISHED HOLE SIZES.
10. MOUNTING HOLES ARE UNPLATED
 Ø 2.40 +/- 0.1 FOR PRESS-FIT TAILS
 Ø 2.10 +/- 0.1 FOR SOLDER TAILS

dr	Wei-Long Zhang	2011/12/02	projection	MM	size	A2	scale	4:1
eng	Wei-Long Zhang	2012/01/03			ecn no.	-	rel level	
chr	-	-			product family	CARD EDGE	rel level	Released
appr	Pei-Ming Zheng	2012/01/04			title	VERT RECT (36P-16S) HIGH POWER CARD EDGE		rev
www.fci.com			cat. no.	-	Product - Customer Drw	sheet 4 of 4		

Copyright FCI. FCI