

注記  
NOTES

- 材質  
ハウジング: 耐熱性ナイロン  
ピン: 銅合金、ニッケル下地、錫メッキ、金メッキ  
フィッティングネール: 銅合金、ニッケル下地、錫メッキ  
MATERIAL  
HOUSING: POLYAMIDE  
PIN: COPPER ALLOY, GOLD OR TIN OVER NICKEL PLATE.  
FITTING NAIL: COPPER ALLOY, TIN OVER NICKEL PLATE.
- 色: ナチュラル  
COLOR: NATURAL
- 嵌合相手  
ハウジング: 502351-\*\*-00  
錫メッキ端子: 50212-8\*00, 50372-8\*00  
金メッキ端子: 56161-8\*81  
MATES WITH  
HOUSING: 502351-\*\*-00  
SN PLATING TERMINAL: 50212-8\*00, 50372-8\*00  
AU PLATING TERMINAL: 56161-8\*81
- エンボス梱包品の詳細はSD-502352-002参照  
DETAILED TAPING PACKAGE, SEE SD-502352-002.
- ELV及びRoHS適合  
ELV AND RoHS COMPLIANT

Au	20.0	502352-0810	8
	18.0	502352-0710	7
	16.0	502352-0610	6
	14.0	502352-0510	5
	12.0	502352-0410	4
	10.0	502352-0310	3
	8.0	502352-0210	2
PLATING	A	EMBOSSED PACKAGE ORDER NO.	CKTS
CONNECTOR SERIES NO. 502352-**-18			

Sn	20.0	502352-0800	8
	18.0	502352-0700	7
	16.0	502352-0600	6
	14.0	502352-0500	5
	12.0	502352-0400	4
	10.0	502352-0300	3
	8.0	502352-0200	2
PLATING	A	EMBOSSED PACKAGE ORDER NO.	CKTS
CONNECTOR SERIES NO. 502352-**-08			

REVISED EC NO: JTR2013-0002 DRMNY/TAMAKI 2012/07/03 CHKD/HKOMATSU 2012/07/04 APPR/MAYAMOTO 2012/07/04	GENERAL TOLERANCES (UNLESS SPECIFIED)		DIMENSION STYLE MM ONLY		SCALE 5:1	DESIGN UNITS METRIC	THIRD ANGLE PROJECTION
	10 UNDER	± 0.2	DRAWN BY SHSHIBATA	DATE 2007/12/18	TITLE 2.0MM PITCH W/B CONN. WAFER ASSY R/A SMT MOLEX INCORPORATED SD-502352-001		
	10 OVER 30 UNDER	± 0.25	CHECKED BY HKOMATSU	DATE 2007/12/18			
	30 OVER	± 0.3	APPROVED BY AKANESHIGE	DATE 2007/12/18			
ANGULAR	± 3 °	MATERIAL NO.					
	DRAFT WHERE APPLICABLE MUST REMAIN WITHIN DIMENSIONS		SEE CHART		DOCUMENT NO.	SHEET NO. 1 OF 2	
	THIS DRAWING CONTAINS INFORMATION THAT IS PROPRIETARY TO MOLEX INCORPORATED AND SHOULD NOT BE USED WITHOUT WRITTEN PERMISSION						

10 9 8 7 6 5 4 3 2 1

F

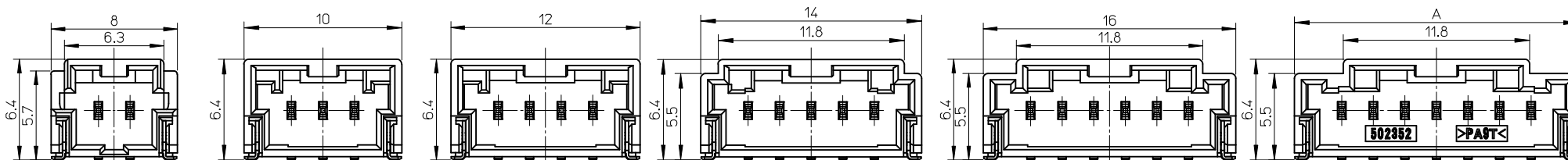
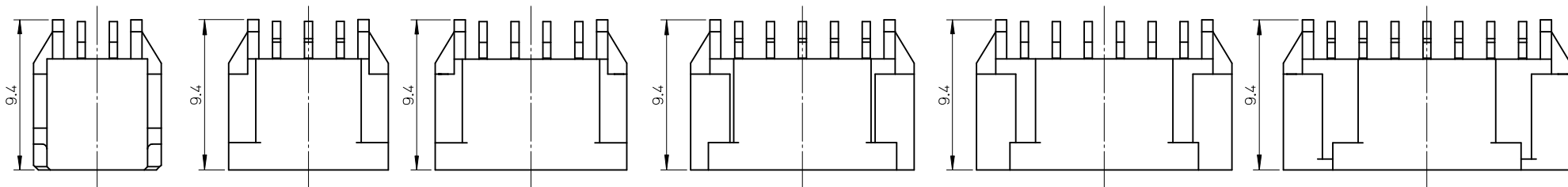
E

D

C

B

A



2CKTS

3CKTS

4CKTS

5CKTS

6CKTS

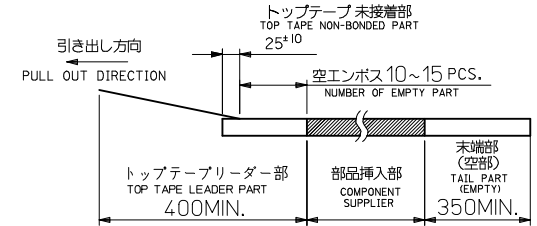
7CKTS or MORE

REVISED EC NO: JTR2013-0002 DRWN: Y. TAMAKI CHK'D: H. KOMATSU APPR: M. YAMAMOTO	GENERAL TOLERANCES (UNLESS SPECIFIED)		DIMENSION STYLE MM ONLY		SCALE 4:1	DESIGN UNITS METRIC	THIRD ANGLE PROJECTION		
	10 UNDER	±0.2	DRAWN BY SHSHIBATA	DATE 2007/12/18	TITLE 2.0MM PITCH W/B CONN. WAFER ASSY R/A SMT				
	10 OVER 30 UNDER	±0.25	CHECKED BY HKOMATSU	DATE 2007/12/18					
	30 OVER	±0.3	APPROVED BY AKANESHIGE	DATE 2007/12/18	MOLEX INCORPORATED 				
ANGULAR ±3 °		MATERIAL NO. SEE CHART		DOCUMENT NO. SD-502352-001					
DRAFT WHERE APPLICABLE MUST REMAIN WITHIN DIMENSIONS		THIS DRAWING CONTAINS INFORMATION THAT IS PROPRIETARY TO MOLEX INCORPORATED AND SHOULD NOT BE USED WITHOUT WRITTEN PERMISSION							

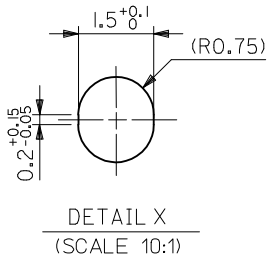
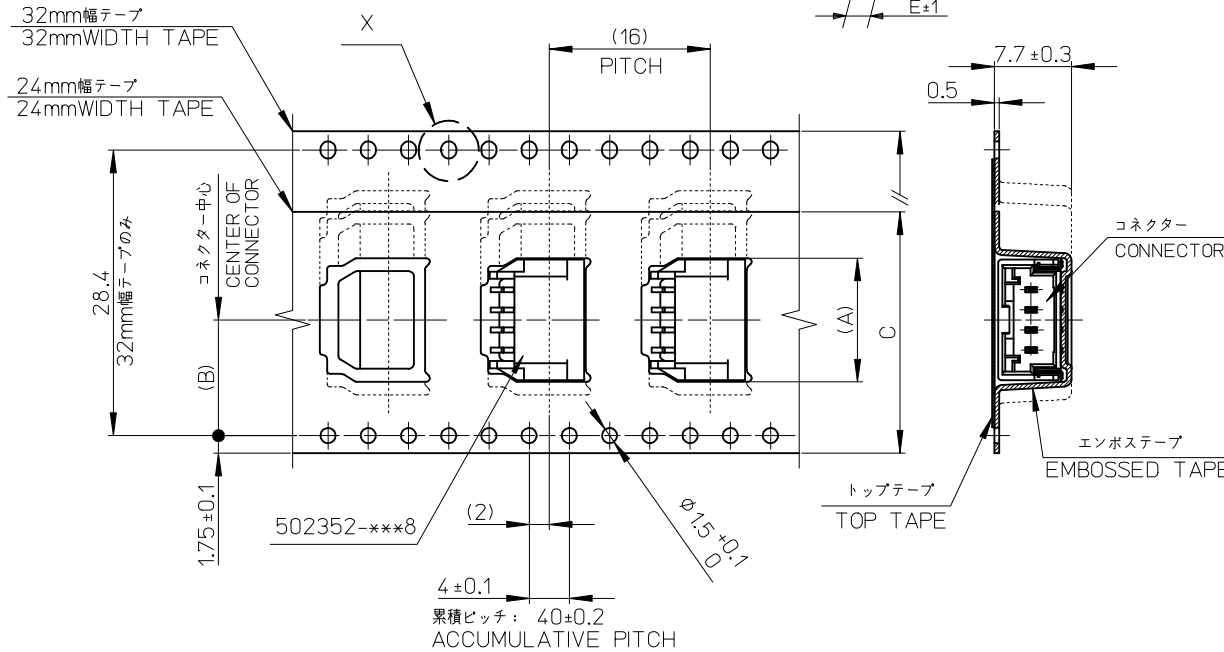
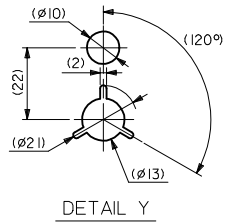
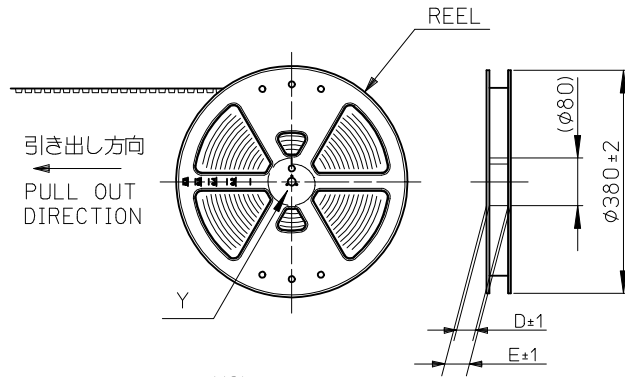
10 9 8 7 6 5 4 3 2 1

注記  
NOTES

- 製品番号502352-\*\*\*0 詳細寸法については、製品単体図面を参照下さい。  
PART NO. 502352-\*\*\*0 . SEE SALES DRAWING FOR CONNECTOR
- 梱包数量： 700個/リール  
NUMBER OF CONNECTORS 700PCS/REEL
- リードテープ長さ  
LEAD TAPE LENGHT



4. 材料  
MATERIAL  
キャリアテープ： ポリスチレン  
CARRIER TAPE: POLYSTYRENE  
トップテープ： PET, PE, PEF  
TOP TAPE  
リール： ポリスチレン  
REEL: POLYSTYRENE



引き出し方向  
PULL OUT DIRECTION

エンボステープ内の製品の向き  
DIRECTION OF CONNECTOR  
IN EMBOSSED TAPE

REVISED EC NO: JTR2013-0002 DRWN:YTAMAKI 2012/07/03 CHKD:HKOMATSU 2012/07/04 APPR: MAYAMAMOTO 2012/07/04	GENERAL TOLERANCES (UNLESS SPECIFIED)		DIMENSION STYLE MM ONLY		SCALE	DESIGN UNITS METRIC	THIRD ANGLE PROJECTION	
	10 UNDER	±0.2	DRAWN BY SHSHIBATA	DATE 2007/6/6	TITLE 2.0MM PITCH W/B CONN. WAFFER ASSY EMBOSSED TAPE PACKAGE			
	10 OVER 30 UNDER	±0.25	CHECKED BY TAITO	DATE 2007/6/6	MOLEX MOLEX INCORPORATED			
	30 OVER	±0.3	APPROVED BY MAYAMAMOTO	DATE 2012/03/14	DOCUMENT NO. SD-502352-002		SHEET NO. 1 OF 2	
REV	ANGULAR ±1 ° DRAFT WHERE APPLICABLE MUST REMAIN WITHIN DIMENSIONS		MATERIAL NO. SEE CHART		THIS DRAWING CONTAINS INFORMATION THAT IS PROPRIETARY TO MOLEX INCORPORATED AND SHOULD NOT BE USED WITHOUT WRITTEN PERMISSION			

	10		9		8		7		6		5		4		3		2		1						
F	Sn	37.4	33.4	32	14.2	20.3	502352-0800	8	Au	37.4	33.4	32	14.2	20.3	502352-0810	8	PLATING	E	D	C	(B)	(A)	エンボス極包品		極数
						18.3	502352-0700	7						製品番号		CKT.									
						16.3	502352-0600	6						MATERIAL NO.											
		14.3	502352-0500	5	29.4	25.4	24	11.5		14.3	502352-0510	5													
		12.3	502352-0400	4						12.3	502352-0410	4													
		10.3	502352-0300	3						10.3	502352-0310	3													
		8.3	502352-0200	2						8.3	502352-0210	2													



REVISED	EC NO: JTR2013-0002	2012/07/03	GENERAL TOLERANCES (UNLESS SPECIFIED)		DIMENSION STYLE MM ONLY		SCALE 1:1	DESIGN UNITS METRIC	THIRD ANGLE PROJECTION		
	DRWN:YAMAKI	2012/07/04	10 UNDER	±0.2	DRAWN BY	DATE	TITLE 2.0MM PITCH W/B CONN. WAFER ASSY EMBOSSED TAPE PACKAGE				
	CHKD:KOMATSU	2012/07/04	10 OVER 30 UNDER	±0.25	SHSHIBATA	2007/6/6					
	APPR:MAYAMOTO	2012/07/04	30 OVER	±0.3	CHECKED BY	DATE	MOLEX INCORPORATED				
	REV	DESCRIPTION	ANGULAR	±1 °	TAITO	2007/6/6					
D		DRAFT WHERE APPLICABLE MUST REMAIN WITHIN DIMENSIONS		APPROVED BY	DATE	DOCUMENT NO.		SHEET NO.			
				MAYAMAMOTO	2012/03/14	SD-502352-002		2 OF 2			
				MATERIAL NO.	SEE CHART					THIS DRAWING CONTAINS INFORMATION THAT IS PROPRIETARY TO MOLEX INCORPORATED AND SHOULD NOT BE USED WITHOUT WRITTEN PERMISSION	
				SIZE	A3						