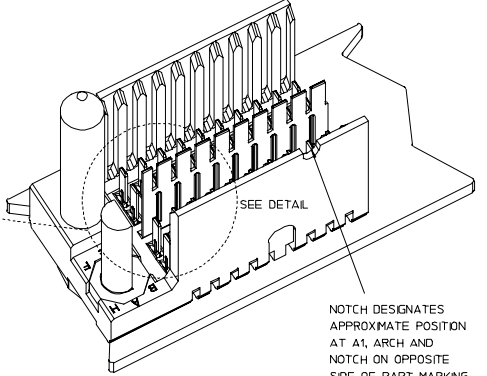
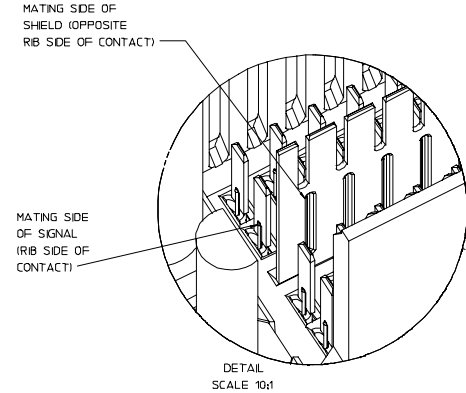
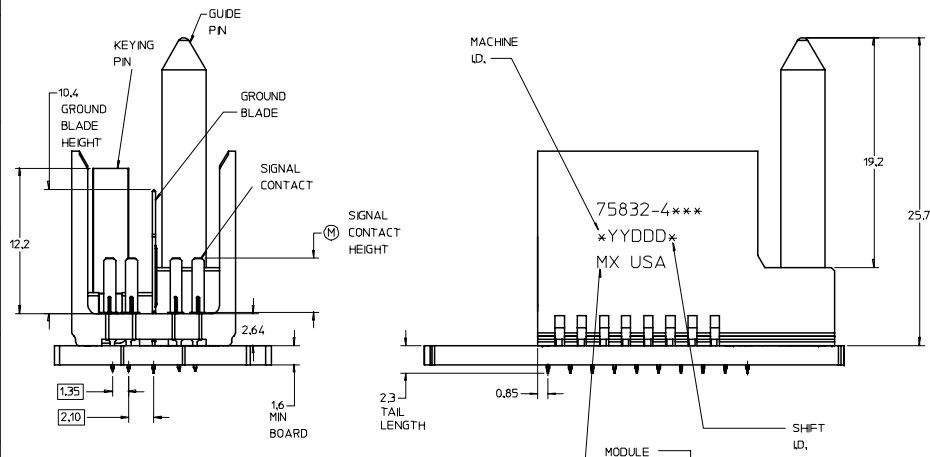
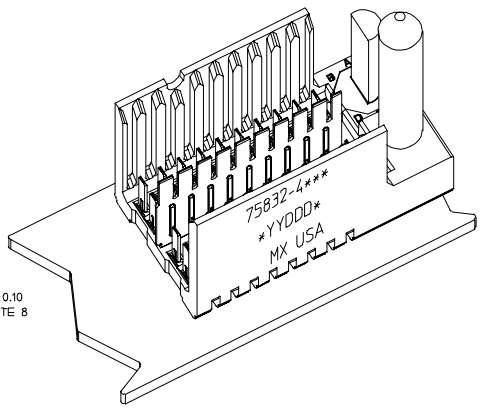
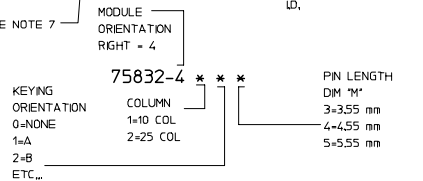


ROW AG & EG RECOMMENDED FOR ALL APPLICATIONS. THESE ROWS SHOULD BE CONNECTED TO GROUND.

BACKPLANE HOLE PATTERN (COMPONENT SIDE-10 POS SHOWN)



- NOTES:
- MATERIAL: HOUSING - LIQUID CRYSTAL POLYMER (LCP) GLASS-FILLED, UL 94V-0, COLOR - GRAY. SIGNAL CONTACT AND GROUND BLADE - HIGH PERFORMANCE COPPER ALLOY.
 - FINISHES: SELECTIVE GOLD (Au) ON CONTACT AREA, SELECTIVE MATTE TIN (Sn) ON PCB TAILS, NICKEL (Ni) OVERALL.
 - THIS PART CONFORMS TO MOLEX PRODUCT SPECIFICATION PS-75221-999.
 - FOR MIXED CONTACT MATING LENGTHS CONSULT MOLEX FOR AVAILABILITY. CONTACT PAIRS MUST BE THE SAME LENGTH.
 - FOR SPECIFIC PART NUMBER AND MATING INFORMATION PLEASE REFER TO CHART.
 - PACKAGE PER PK-70873-5058.
 - EITHER MARK PART NUMBER AND DATE CODE APPROXIMATELY WHERE SHOWN OR PLACE A LABEL ON THE TUBE.
 - OPTIONAL HOLE LOCATION FOR GROUNDED GUIDE PIN OR ADDITIONAL GUIDE PIN SUPPORT. FOR GROUNDED GUIDE, HOLE TO BE PLATED, DRILL SIZE $\phi 2.58$, PAD SIZE $\phi 5.50$.
 - THESE PARTS CONFORM TO MOLEX COSMETIC SPECIFICATION PS-45499-002 CLASS B.



| PART NUMBER TABLE | | | | |
|-------------------|----|-------|-------|---------------------------------|
| ASSY PART NO. | K | L | P | TOTAL NO. OF DIFFERENTIAL PAIRS |
| 75832-41** | 9 | 16,65 | 24,78 | 20 |
| 75832-42** | 24 | 44,40 | 52,53 | 50 |

| P/N | 0 | A | B | C | D | E | F | G | H |
|------------------------|---|---|---|---|---|---|---|---|---|
| 75832-4 1 | 0 | A | B | C | D | E | F | G | H |
| KEYING PIN ORIENTATION | | | | | | | | | |

LEAD-FREE PLATING ON SIGNALS, & GROUNDS.

| | | | | | | |
|--|-------------------------------------|---|---|---------------------------|---|---------------------|
| REVISED EC NO: UCP 2007-2580 DRWN: JBINGHAM 2007/05/02 CHKD: 2007/05/02 APPR: SREED 2007/05/02 | QUALITY SYMBOLS 0 1 | GENERAL TOLERANCES (UNLESS SPECIFIED) 4 PLACES ± 3 PLACES ± 2 PLACES ± 1 PLACE ± ANGULAR ± | SCALE 5:1 DESIGN UNITS METRIC DIMENSION STYLE MM ONLY | THIRD ANGLE PROJECTION | REVISE ON CAD ONLY | |
| | | | | | TITLE GBX 2-PAIR RIGHT END BACKPLANE ASSEMBLY LEAD-FREE SALES DRAWING | |
| REVISION DESCRIPTION | DRAWN BY DATE CTHOMAS 2006/01/13 | CHECKED BY DATE KMULVEY 2006/01/16 | APPROVED BY DATE JBINGHAM 2006/01/17 | MATERIAL NO. SEE CHART | DOCUMENT NO. SD-75832-410 | SHEET NO. 1 OF 1 |
| | | | | | | |