

SPECIFICATION REVISION
HISTORY

CUSTOMER : STANDARD PRODUCT
 CUSTOMER P/N :
 PART NAME : SOLENOID PUMP
 DELTA PART NO. : DSP-12050

REV.	DATE	DESCRIPTION	REPORT BY	CHECKED BY	APPROVED BY
A	MAR.19.2015	- ISSUE			



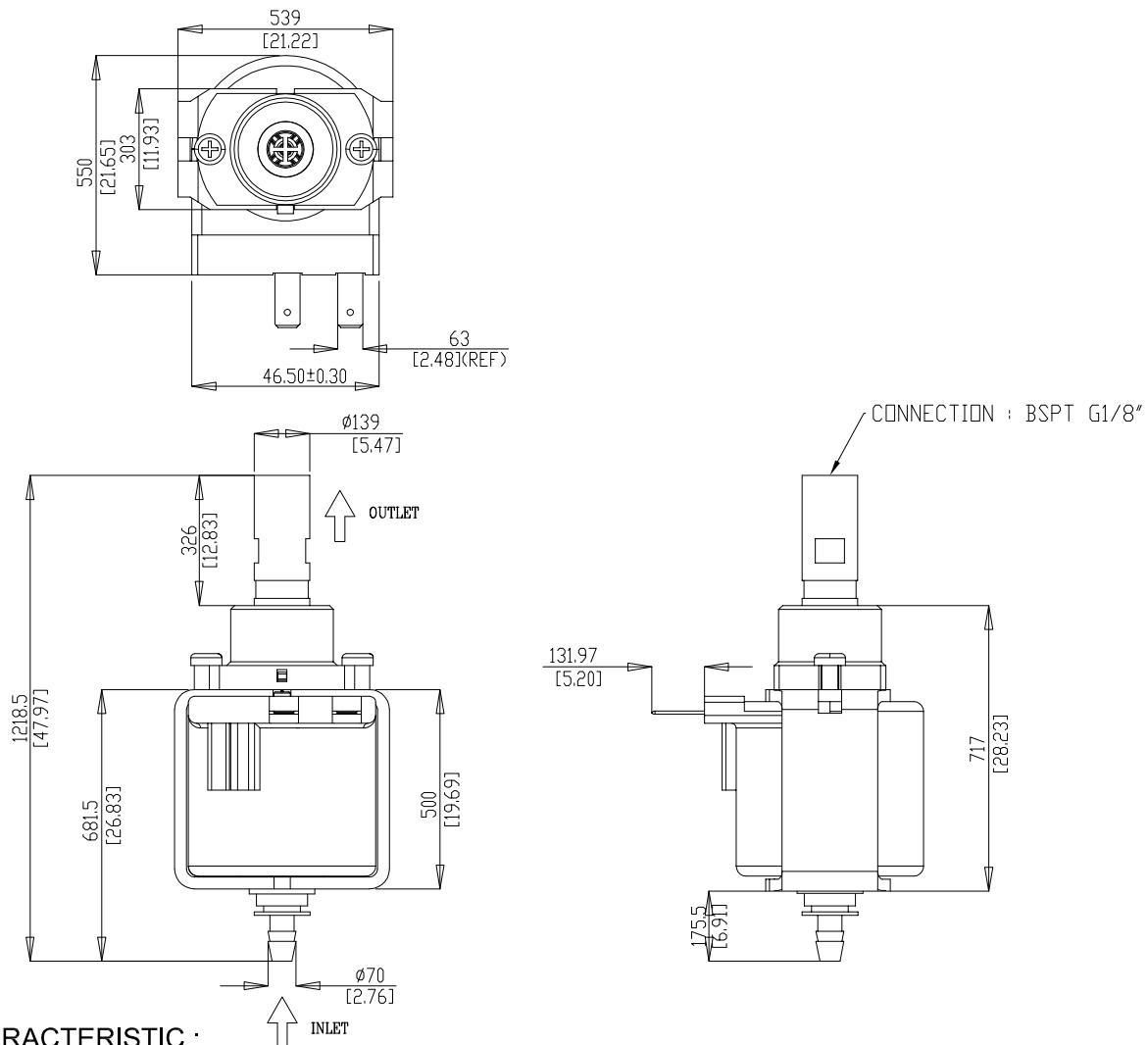
RoHS Compliant

SPECIFICATION FOR APPROVAL

TO : _____

PAGE : 2/4

CUSTOMER PART NO	REV. 00	DELTA PART NO. DSP-12050	ISSUE DATE MAR.19.2015	TEMP(°C) 25
PART NAME Solenoid Pump		DELTA REV. -	USED ON	HUM (%) 58 RH

1. MECHANICAL DIMENSIONS : ($\frac{\text{mm}}{\text{[inch]}}$)

2. CHARACTERISTIC :

- 2-1. OPERATING VOLTAGE: 110Vac / 60Hz
- 2-2. POWER CONSUMPTION: 48W
- 2-3. OUTLET : BSPT 1/8"
- 2-4. FLOW RATE MAX : 500 c.c./min
- 2-5. FLOW RATE TOLERANCE : $\pm 15\%$
- 2-6. PRESSURE MAX : 12.5 bar (180 psi)
- 2-7. WATER TEMPERATURE : 20 °C
- 2-8. WORKING CYCLE : 1 min ON / 15 sec. OFF
- 2-9. INTEGRATED DIODE
- 2-10. TEMPERATURE CLASS : F (155°C)
- 2-11. MAX ON TIME : 11 min



RoHS Compliant

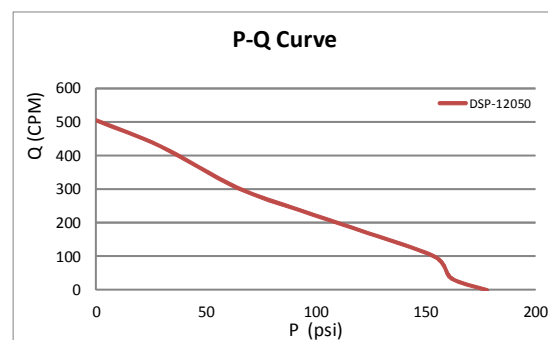
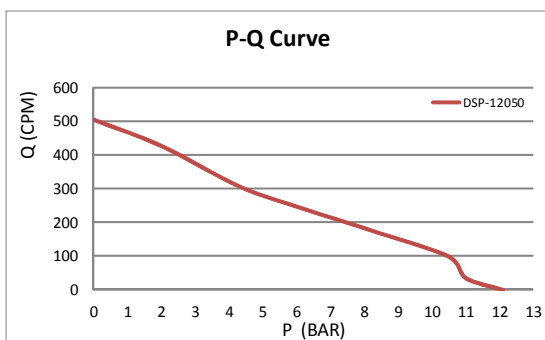
SPECIFICATION FOR APPROVAL

TO : _

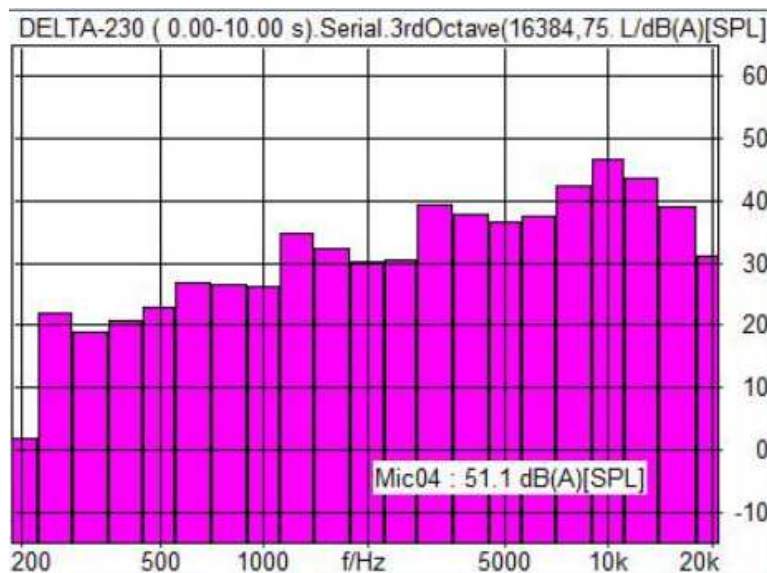
PAGE : 3/4

CUSTOMER PART NO	REV. 00	DELTA PART NO. DSP-12050	ISSUE DATE MAR.19.2015	TEMP(°C) 25
PART NAME Solenoid Pump		DELTA REV. -	USED ON	HUM (%) 58 RH

3. P-Q CURVE :



3. NOISE TEST : 51.1 dBA (at p=0 Bar/ 100cm)





RoHS Compliant

SPECIFICATION FOR APPROVAL

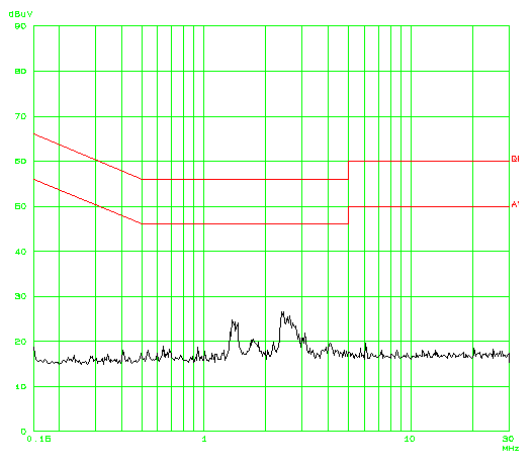
TO : _

PAGE : 4/4

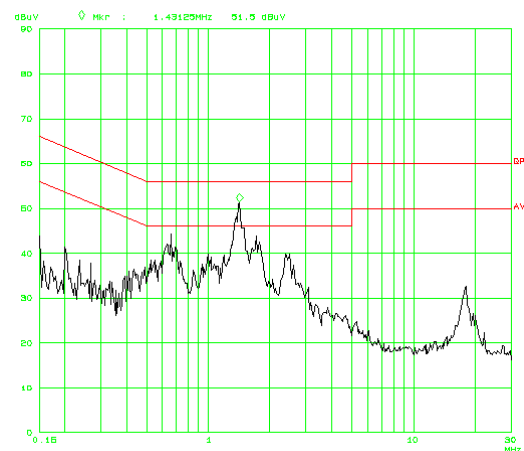
CUSTOMER PART NO	REV. 00	DELTA PART NO. DSP-12050	ISSUE DATE MAR.19.2015	TEMP(°C) 25
PART NAME Solenoid Pump		DELTA REV. -	USED ON	HUM (%) 58 RH

4. EMC TEST :

3-1. BACKGROUND

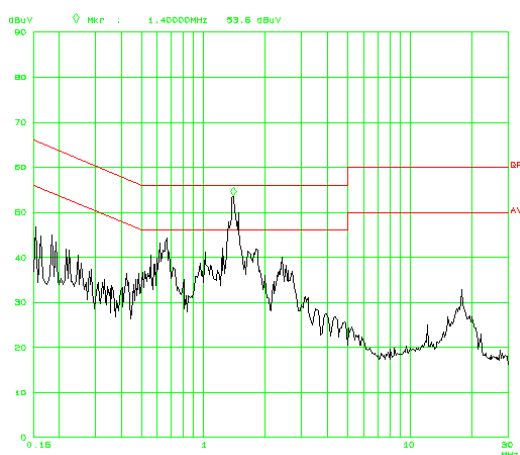


3-2. STANDBY



1.43125 MHz QP 49.7dB AV 43dB

3-3. OPERATION



1.4 MHz QP 49dB AV 42.5dB