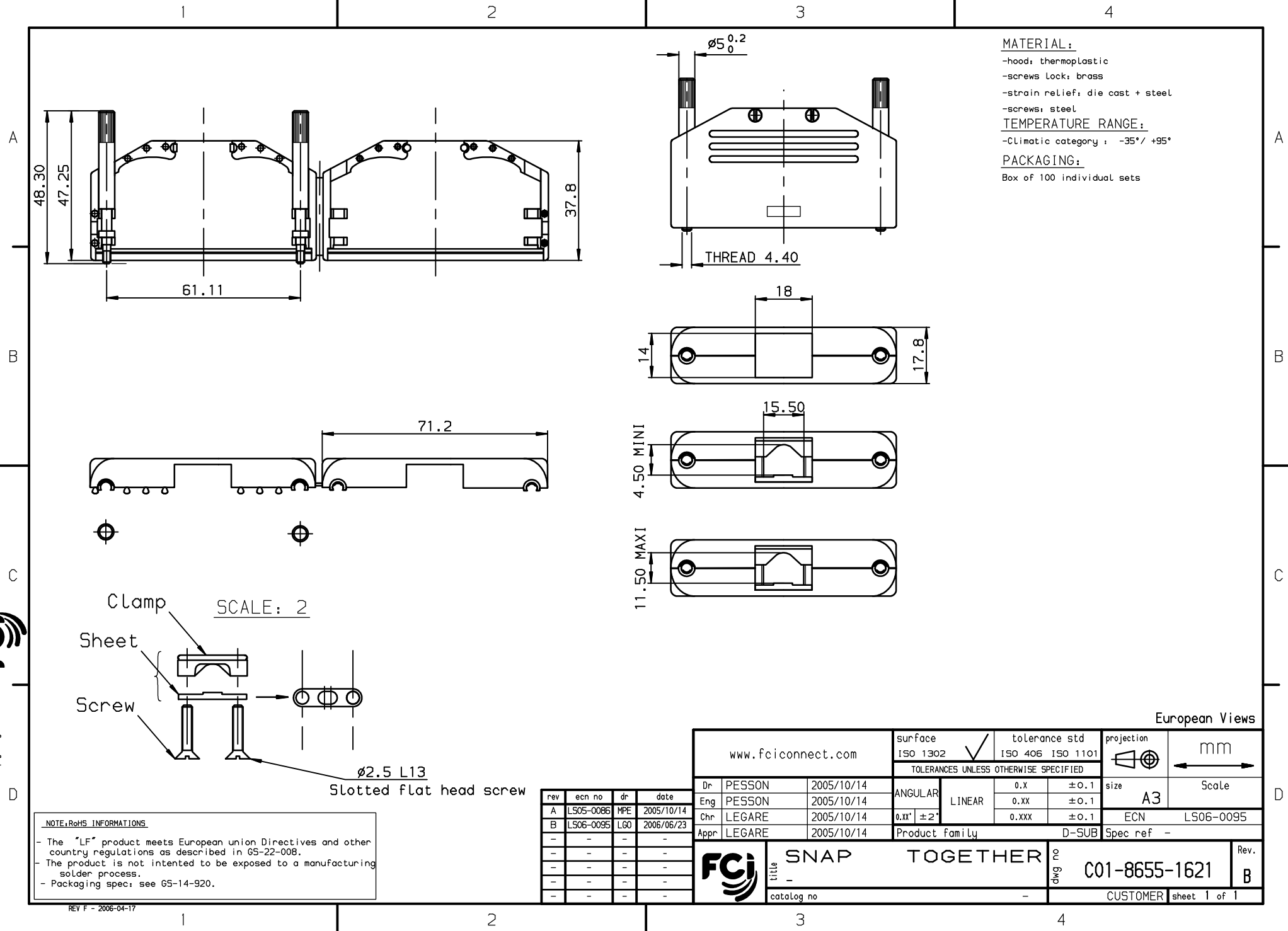


Copyright FCI.
FCI



MATERIAL:
 -hood: thermoplastic
 -screws lock: brass
 -strain relief: die cast + steel
 -screws: steel

TEMPERATURE RANGE:
 -Climatic category: -35°/+95°

PACKAGING:
 Box of 100 individual sets

NOTE: RoHS INFORMATION

- The "LF" product meets European union Directives and other country regulations as described in G5-22-008.
- The product is not intended to be exposed to a manufacturing solder process.
- Packaging spec: see G5-14-920.

rev	ecn no	dr	date
A	LS05-0086	MPE	2005/10/14
B	LS06-0095	LGO	2006/06/23
-	-	-	-
-	-	-	-
-	-	-	-
-	-	-	-

www.fciconnect.com		surface ISO 1302 ✓	tolerance std ISO 406 ISO 1101	projection mm
		TOLERANCES UNLESS OTHERWISE SPECIFIED		
Dr	PESSON	2005/10/14	ANGULAR	LINEAR
Eng	PESSON	2005/10/14	0.X	±0.1
Chr	LEGARE	2005/10/14	0.XX	±0.1
Appr	LEGARE	2005/10/14	0.XXX	±0.1
Product family			D-SUB	Spec ref -
title SNAP TOGETHER		cat no C01-8655-1621		Rev. B
CUSTOMER		sheet 1 of 1		

REV F - 2006-04-17