

**Product number C10436_NIS83-MX-3-M**

Family	Martha	FWHM	22 degrees
Type	Lens array	Efficiency	-
LED	NS6x83	cd/lm	-
Color	Clear	Gerber File	Available
Diameter	50 mm	MR16 applications	
Height	15.3 mm		
Style	Round		
Optic Material	PMMA		
Holder Material	-		
Fastening	["pin", "glue"]		
Status	Production ready		

**Product number C11943_NIS83-MX-3-MR**

Family	Martha	FWHM	22 degrees
Type	Lens array	Efficiency	-
LED	NS6x83	cd/lm	-
Color	Clear	Gerber File	Available
Diameter	50 mm	MR16 Applications	
Height	15.3 mm		
Style	Round		
Optic Material	PMMA		
Holder Material	-		
Fastening	["pin", "glue"]		
Status	Production ready		

**Product number C11944_NIS83-MX-3-WR**

Family	Martha	FWHM	34 degrees
Type	Lens array	Efficiency	-
LED	NS6x83	cd/lm	-
Color	Clear	Gerber File	Available
Diameter	50 mm	Space for O-ring in flange.	
Height	15.3 mm		
Style	Round		
Optic Material	PMMA		
Holder Material	-		
Fastening	["pin", "glue"]		
Status	Production ready		

**Product number C10364_NIS83-MX-3-W**

Family	Martha	FWHM	48 degrees
Type	Lens array	Efficiency	-
LED	NS6x83	cd/lm	-
Color	Clear	Gerber File	Available
Diameter	50 mm	MR16 APPLICATIONS	
Height	15.3 mm		
Style	Round		
Optic Material	PMMA		
Holder Material	-		
Fastening	["glue", "pin"]		
Status	Production ready		



Product number C11945_NIS83-MX-3-WWR

Family	Martha	FWHM	48 degrees
Type	Lens array	Efficiency	-
LED	NS6x83	cd/lm	-
Color	Clear	Gerber File	Available
Diameter	50 mm		Space for O-ring in flange.
Height	15.3 mm		
Style	Round		
Optic Material	PMMA		
Holder Material	-		
Fastening	["glue", "pin"]		
Status	Production ready		

NOTE: The typical divergence will be changed by different color, chip size and chip position tolerance. The typical total divergence is the full angle measured where the luminous intensity is half of the peak value.



PRODUCT DATASHEET

Martha series

last update 16/5/2012

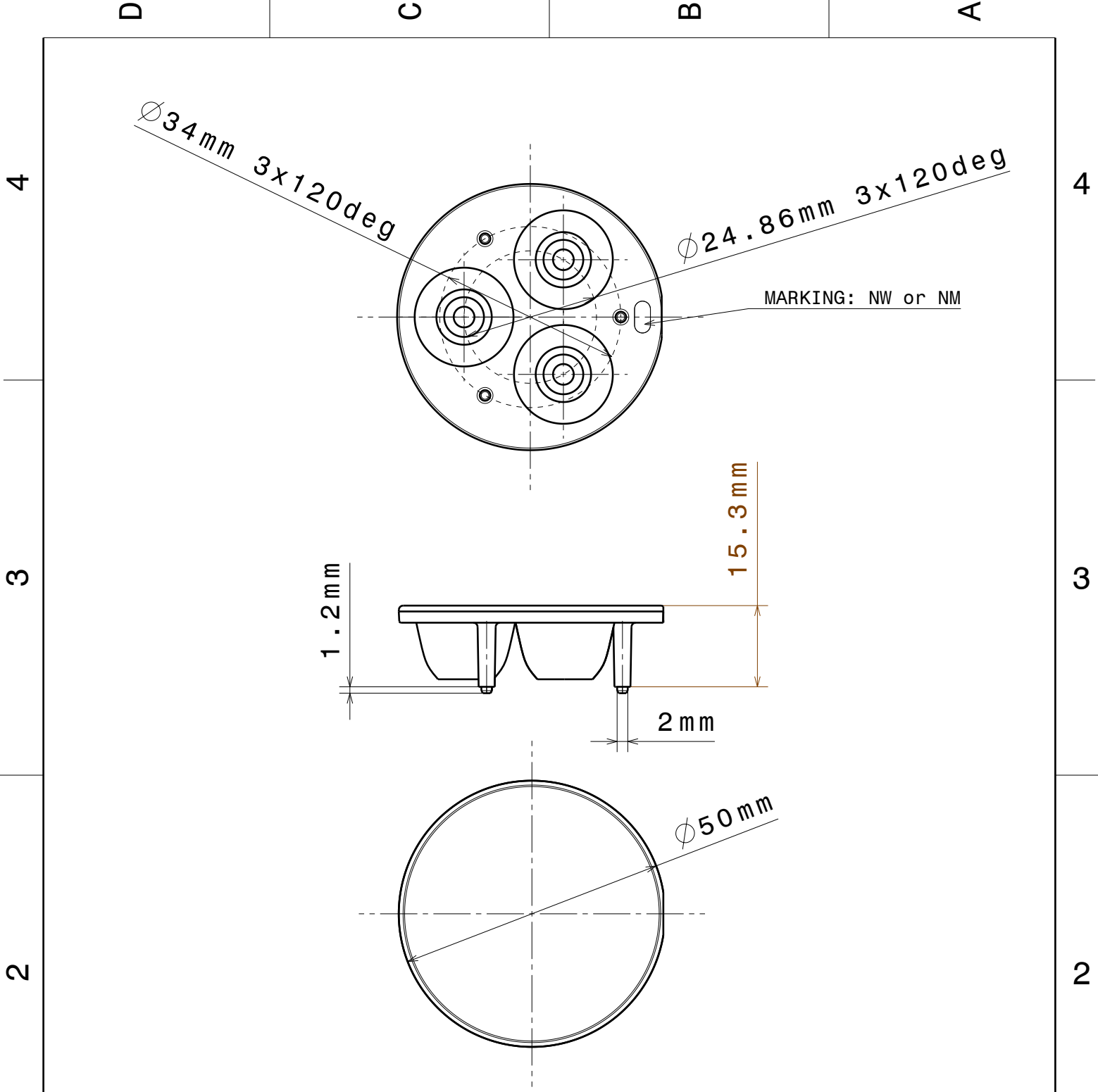
GENERAL INFORMATION

- Product series especially designed & optimized for NS6x83 series of LEDs.
- Special care taken to make light distribution as uniform as possible.
- Lens material optical grade PMMA with high UV and temperature resistance. Allows use of high current and temperature conditions.

Please find more information about used material from below:

http://ledil.fi/sites/default/files/Documents/Technical/Material/PMMA%20N%20UL94_Yellow%20Card.pdf

<http://ledil.fi/sites/default/files/Documents/Technical/Material/PMMA%20N%20PLEXIGLAS-Datasheet.pdf>



Material: PMMA Clear

This drawing is our property. It can't be reproduced or communicated without our written agreement.



Ledil Oy
Salorankatu 10
FIN-24100 SALO
Finland

DRAWING TITLE

Datasheet NIS83-MX-3 & 6 Lens series

DRAWN BY pv/ah	DATE 21.3.2012	DRAWING TITLE Datasheet NIS83-MX-3 & 6 Lens series			REV 1
CHECKED BY	DATE	SIZE A4	DRAWING NUMBER		REV 1
DESIGNED BY HH	DATE 08.04.2008	SCALE 1:1	WEIGHT (g)	SHEET 1/1	

D

A