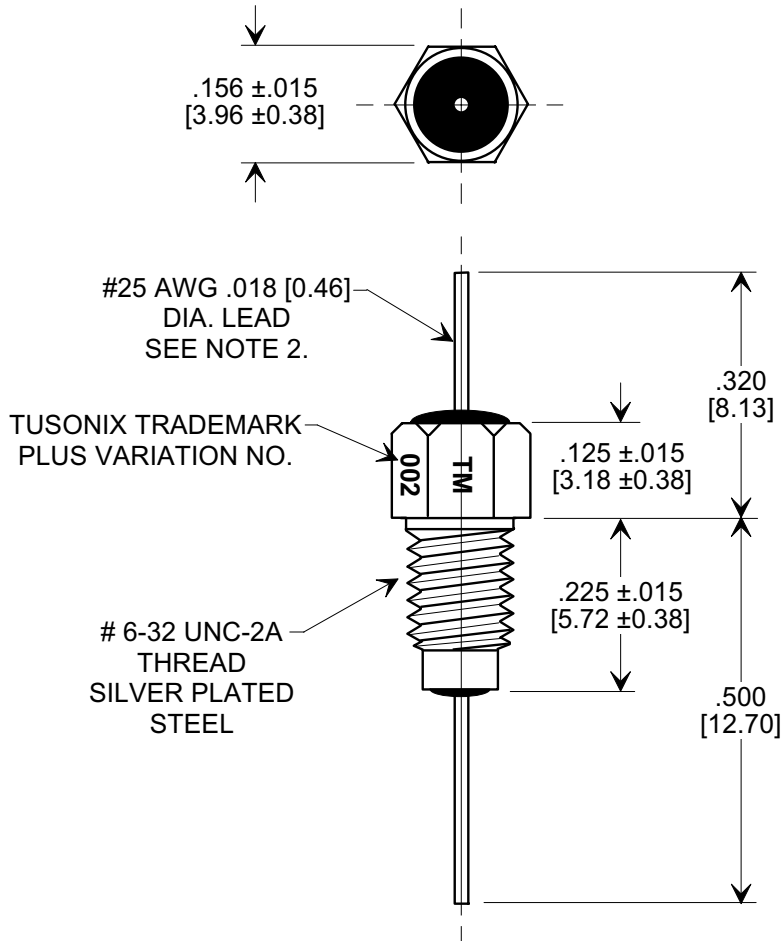
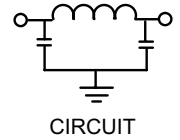
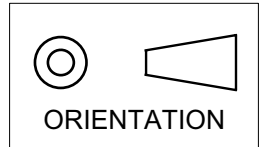


MARKETING SALES DRAWING

DIMENSIONS IN INCHES - DO NOT SCALE THIS DRAWING
DIMENSIONS IN METRIC - []

Electrical Testing
 per Tusonix standard
 test plans and Mil-Std-202
 Test Methods.



NOTES:

- TUSONIX STANDARD PART NUMBER: 4260-002.
 TUSONIX RoHS COMPLIANT PART NUMBER: 4260-002 LF.
 CUSTOMER MUST SPECIFY STANDARD OR RoHS PART NUMBER WHEN ORDERING.
- LEAD FINISH: STANDARD PART #: SOLDER PLATED COPPER. RoHS PART #: SILVER PLATED.
- PART MARKING: TRADEMARK AND VARIATION NUMBER ON HEX FLATS.
 STANDARD PART: BLACK INK. RoHS PART: GREEN INK.
- SUPPLIED WITH SILVER PLATED COPPER ALLOY HEX NUT AND INTERNAL TOOTH LOCK WASHER.

7,500	50 VDC	10 GΩ	125 VDC	3 A	8	18	45	65	70	70
MIN. CAP.(pf)	+ 125 °C	I.R. MIN. @ 100 VDC	DWV	CURRENT	3 MHz	10 MHz	30 MHz	100 MHz	300 MHz	1 GHz
	MINIMUM NO LOAD INSERTION LOSS (dB) AT 25°C PER MIL-STD-220									

X-2015 Rev-0	REVISION RECORD			--TOLERANCES-- Unless Otherwise Specified	Title		
	Original Release C.O. 6611	1			MULTI LAYER BUSHING STYLE EMI FILTER		
	DIM'S CHGD & TITLE CHGD. E.C. 5-26-92	6667	RDN TO COMP FMT. S.M. 03-05-02	DECIMAL ± .031 [0.79]	Drawn	S. M. 03-05-02	Scale 4 X
		2	20020528-3-09	ANGLES ±	Approved	T.C. 03-05-02	
	3	ADDED NOTES 1-4. S.M. 12-06-05		TUSONIX TUCSON, ARIZONA	A	4260-002	
		20051118-2-04					