



Quick Start Guide

TMD3782EVM

**TMD3782 Light-To-Digital Color Ambient Light Sensor
With Proximity Detection**

Version 1.1





Table of Contents

1	Out of the box.....	3
2	Software installation.....	3
3	Connect Hardware.....	3
4	Start Application.....	4
5	Contact and Support.....	5



1 Out of the box

Each TMD3782 EVM comes with the following components:

Controller board v2.1

- TMD3782 Daughterboard
- USB Cable with A connector and mini B connector
- Flash Drive with Application Software and Documents



2 Software installation

Most PCs should have one or more Universal Serial Bus (USB) ports. Install the **ams** flash drive into an unused USB port.

1. Double-click the Setup.exe file on the flash drive, or
2. Click Start -> Click Run -> Type E: setup.exe and press Enter. **IMPORTANT:** Use the appropriate drive letter in the above command to install the software. Flash Drive will commonly be assigned the next available drive letter for example C: hard drive D: CD-ROM E: flash drive

The Digital Light Sensor Setup Wizard will open and guide you through the installation of the TMD3782 host software. (Figures 2 through 8). To re-install, run the setup.exe file again. To remove the software from your computer, Select **ams** -> TMD3782 EVM -> Uninstall TMD3782 EVM or use the Windows Control Panel (Figure 9).

3 Connect Hardware

Plug the TMD3782 Daughterboard into the Controller board. (Figure 1) Always use ESD procedures when handling the EVM. Using the enclosed USB cable, plug the mini-B connector into the EVM module. Using the other end of the cable, plug the USB A connector into a USB port on the computer.

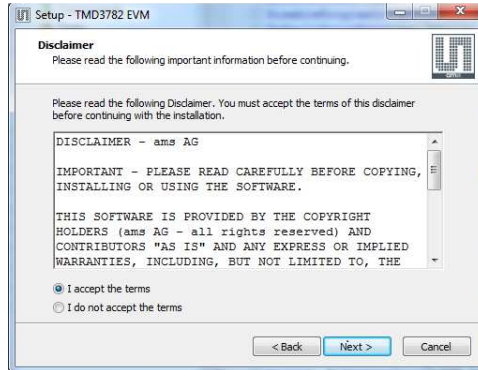


4 Start Application

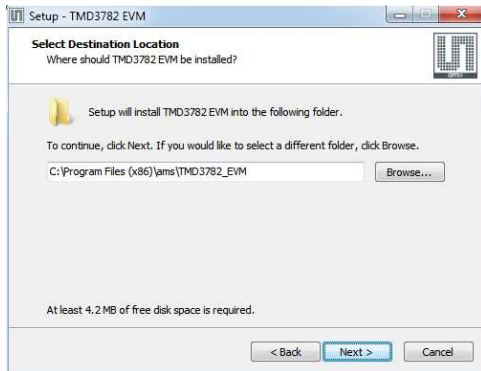
Click the digital Light Sensors icon on the desktop



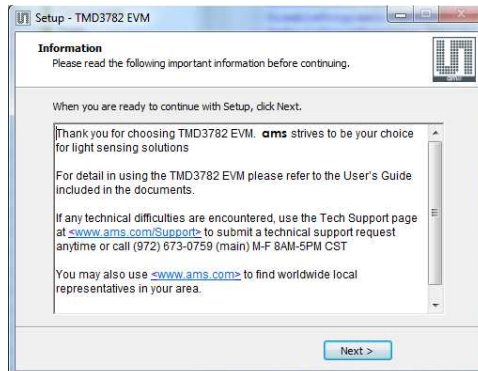
Welcome Screen



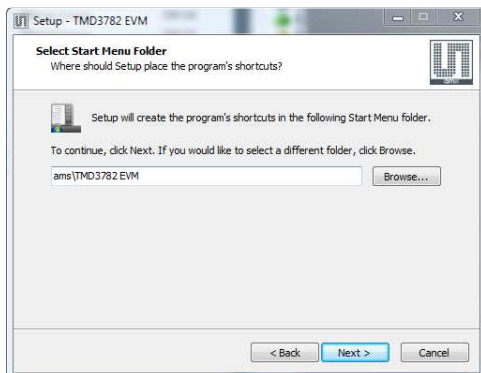
Liability Disclaimer



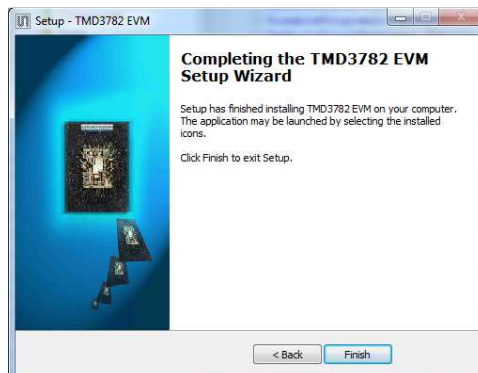
Select Installation Folder



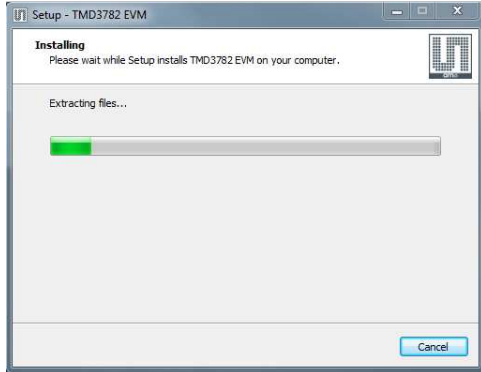
Thank you Screen



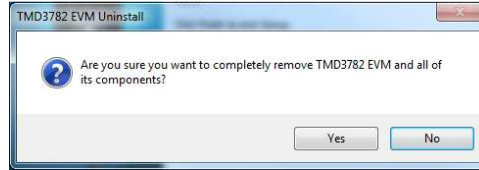
Select Start Menu Folder



Installation Completely Successfully



Installation in Progress



Remove Installation

5 Contact and Support

For detail in using the TMD3782 EVM please refer to the User's Guide included in the documents.

If any technical difficulties are encountered, use the Tech Support page at

<http://www.ams.com/Support> to submit a technical support request anytime or call (972) 673-0759

(main) M-F 8AM-5PM CST You may also use <http://www.ams.com> to find worldwide local representatives in your area.