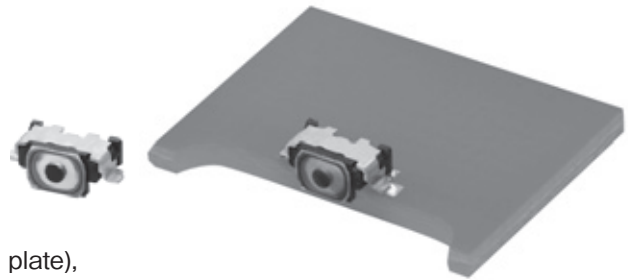


NEW

3.4mm×1.7mm Side-operational Edge-mount Light Touch Switches

Type: EVPAT



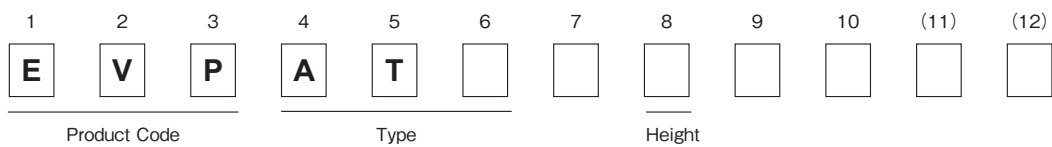
■ Features

- External dimensions : 3.4mm×1.7mm (Excluding the push plate), Height 1.6mm (Printed circuit board being as low as 1.105mm)
- High operability
Equipped with an actuator (push plate)
- IP67 characteristic

■ Recommended Applications

- Operation switches for portable electronic equipment
(Mobile phones, Digital still cameras, Camcorders Portable audio players, etc.)

■ Explanation of Part Numbers



■ Specifications

Type	Snap action / Push-on type SPST	
Electrical	Rating	10μA 2V DC to 20mA 15V DC (Resistive load)
	Contact Resistance	500mΩ max.
	Insulation Resistance	50MΩ min. (at 100V DC)
	Dielectric Withstanding Voltage	250V AC for 1 minute
	Bouncing	10ms max. (ON, OFF)
Mechanical	Operating Force	1.6N
	Travel	1.6N : 0.11 mm
Endurance	Operating Life	500,000cycles min.
Operating Temperature		-40°C to +85°C
Storage Temperature		-40°C to +85°C (Bulk) -20°C to +60°C (Taping)
Minimum Quantity/Packing Unit		10,000 pcs. Embossed Taping (Reel Pack)
Quantity/Carton		50,000 pcs.

Note: Non washable

■ Dimensions in mm (not to scale)

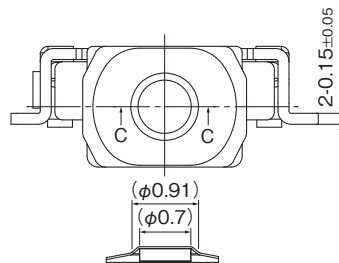
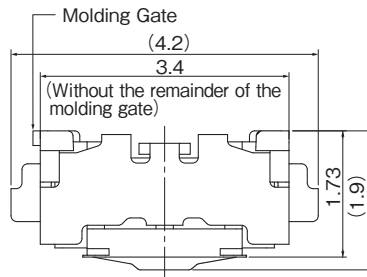
EVPAT

(Embossed Taping)

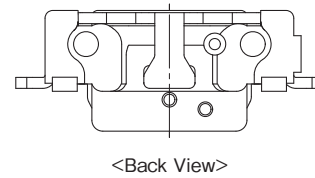
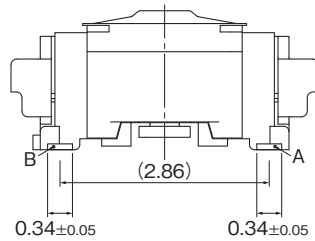
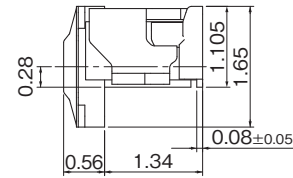


General dimension tolerance : ± 0.1
 () dimensions are reference dimensions.

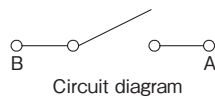
This reference specifications are subject to change.



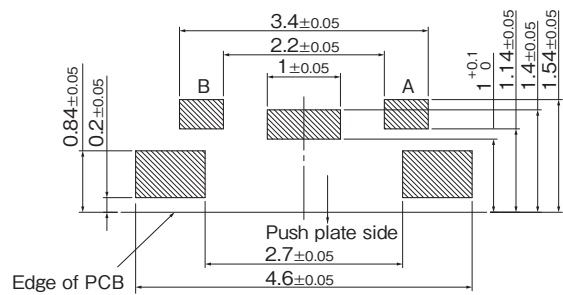
Actuator cross section (Section C-C)



<Back View>



Circuit diagram

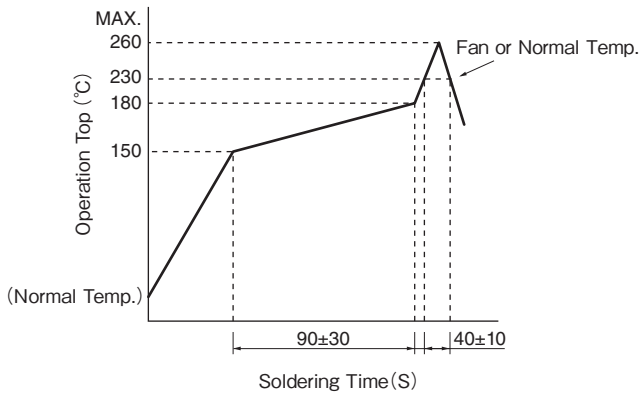


Land pattern plan

Soldering thickness $t=0.12\pm0.02$

Part Numbers	Operating Force	Height	Operating Life
EVPAT2G1B000	1.6N	1.105mm	500,000cycles

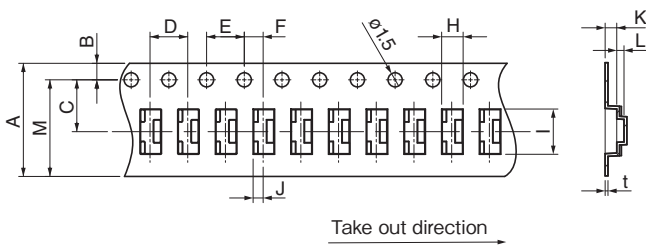
■ Recommended Reflow Soldering Conditions



* Reflow temperature may vary by location even in the same reflow condition. Please check the reflow temperature at terminals and at the top of a switch to make sure the both temperatures are within the specification. If even one of them is out of the specifications, please adjust.

● Embossed Carrier Taping

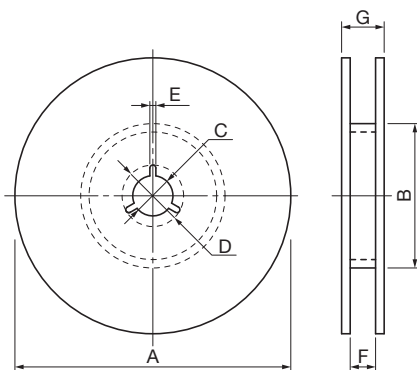
Tape width=12.0 mm



- Taping condition : Lack of products in the middle of taping should be one MAX, but total quantity specified in the specifications should be secured.
- Peeling off strength of top tape : It should be within 0.2N to 1.0N at 165 degree in peeling off angle.
- Joint of carrier tape : One joint per one reel may exist.

Unit : mm															
Part No.	Height	A	B	C	D	E	F	G	H	I	J	K	L	M	t
EVPAT	1.105	12.0±0.2	1.75±0.1	5.5±0.05	4.0±0.1	4.0±0.1	2.0±0.05	1.5 ^{+0.1} ₀	2.28±0.2	4.8±0.2	(1.065)	1.23±0.1	0.77±0.1	(10.25)	0.3±0.05

● Standard Reel Dimensions in mm (not to scale)



Item	A	B	C	D	E
Rate (mm)	φ380.0±2.0	φ80.0±1.0	φ13.0±0.2	φ21.0±0.8	2.0±0.5

Item	F	G
Rate (mm)	13.4±1.0	17.4±1.0