

UAK 2-PE/S-X-120AC-ST

This item is no longer available. Should you have any questions, please contact our Sales Team.


Order No.: 2798682



<http://eshop.phoenixcontact.de/phoenix/treeViewClick.do?UID=2798682>

Protective plug UAK with surge voltage equipment protection for power supply units, visual fault warning. Nominal voltage: 120 V AC

Commercial data

GTIN (EAN)	 4 017918 073855
Note	Made-to-order
sales group	J037
Pack	10 pcs.
Customs tariff	85363010

Product notes

WEEE/RoHS-compliant since:
06/18/2006



<http://www.download.phoenixcontact.com>
Please note that the data given here has been taken from the online catalog. For comprehensive information and data, please refer to the user documentation. The General Terms and Conditions of Use apply to Internet downloads.

Technical data

Standards

Housing material	PA
Inflammability class acc. to UL 94	V2

Color	black
Degree of protection	IP20
Ambient temperature (operation)	-20 °C ... 60 °C
Arrester can be tested with TT-Tester from software version:	From SW rev. 7.02
Arrester can be tested with CHECKMASTER from software version:	From SW rev. 1.00
Direction of action	1L-N & N-PE

Protective circuit

IEC category	III
Nominal voltage U_N	120 V
Arrester rated voltage U_C	150 V
Nominal current I_N	26 A (at 40°C, 6 A, in conjunction with UAK-BE/L6)
Operating effective current I_C at U_C	≤ 1.1 mA
Ground conductor current I_{PE}	≤ 1.5 μ A
Nominal discharge surge current I_n (8/20) μ s	2.5 kA
Max. discharge surge current I_{max} (8/20) μ s	6.5 kA
Protection level U_P (L-N)	≤ 0.7 kV
Protection level U_P (L-PE)	≤ 0.8 kV
Residual voltage at I_n , (L-N)	≤ 750 V
Residual voltage at I_n , (L-PE)	≤ 450 V
Response time t_A (L-N)	≤ 25 ns
Response time t_A (L-PE)	≤ 100 ns
Max. required back-up fuse	26 A (gL, in conjunction with UAK-BE/L6)

Certificates / Approvals

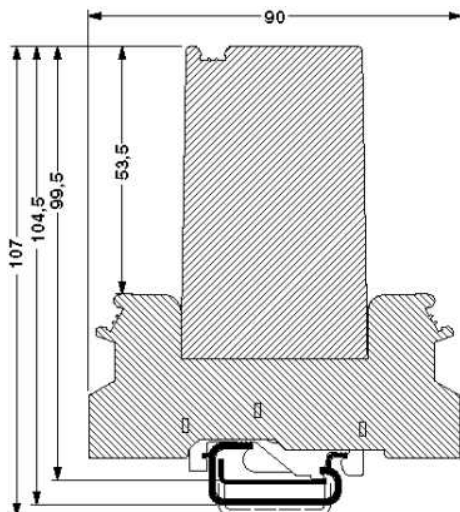


Certification

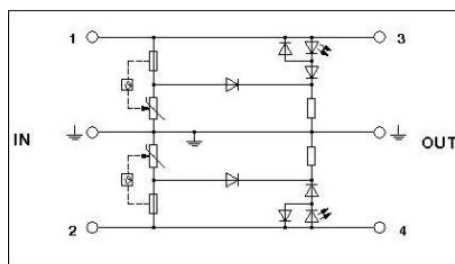
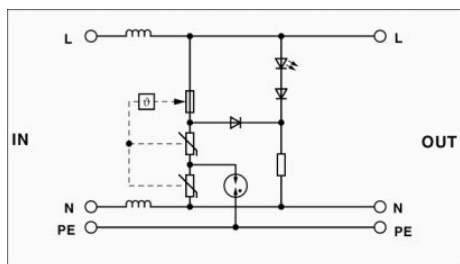
GOST

Diagrams/Drawings

Dimensioned drawing



Circuit diagram



Address

PHOENIX CONTACT Deutschland GmbH
Flachmarktstr. 8
32825 Blomberg, Germany
Phone +49 5235 3 12000
Fax +49 5235 3 41200
<http://www.phoenixcontact.de>



© 2011 Phoenix Contact
Technical modifications reserved;