

DETAILS

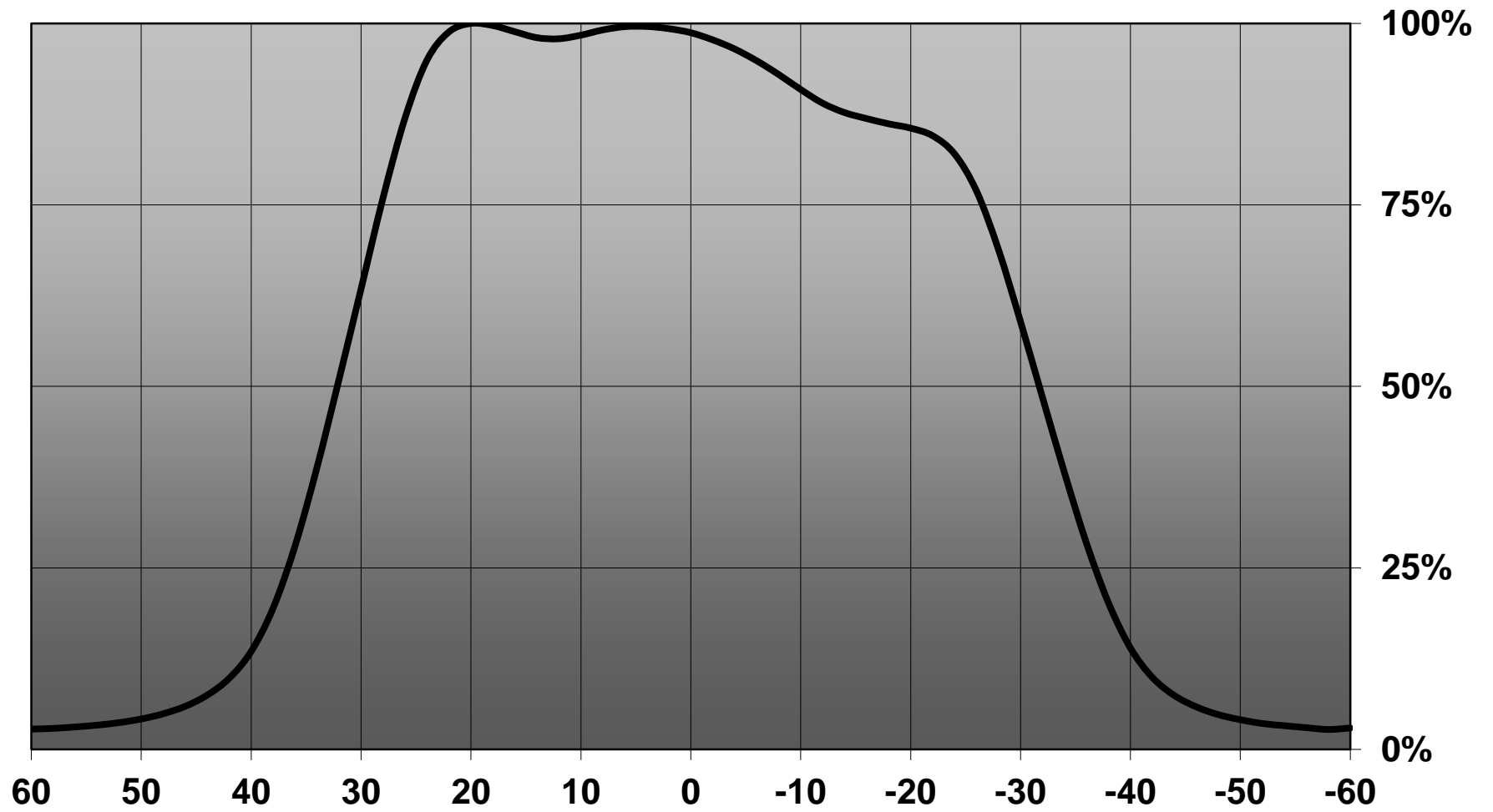
Product Number	C13413_ANNA-40-7-WW
Family	Anna
Type	Lens array
Color	clear
Diameter	40 mm
Height	12,15 mm
Style	round
Optic Material	PMMA
Holder Material	
Fastening	pin
Status	production ready
ROHS Compliant	Yes
Date Updated	12/03/2015



OPTICAL PROPERTIES

LED	Viewing	Light	Effi-		Connector
	Angle	Beam	ciency	cd/lm	
XT-E	sim: 67	Very Wide	sim: 84 %	sim: 0.829	-
LUXEON A	sim: 69	Very Wide	sim: 86 %	sim: 0.810	-
LUXEON R	sim: 68	Very Wide	sim: 88 %	sim: 0.848	-
LUXEON Rebel ES	sim: 68	Very Wide	sim: 89 %	sim: 0.892	-
LUXEON T	sim: 69	Very Wide	sim: 88 %	sim: 0.814	-
LUXEON TX	sim: 65	Very Wide	sim: 91 %	sim: 0.850	-
NF2x757A	64 deg	Very Wide	90 %	0.920	-
NS9x153	sim: 64	Very Wide	sim: 85 %	sim: 0.708	-
NCSxx19A	sim: 59	Very Wide	sim: 88 %	sim: 1.264	-
107	sim: 61	Very Wide	sim: 86 %	sim: 1.079	-
NS9x383	sim: 58	Very Wide	sim: 88 %	sim: 0.974	-
NVSxx19B/NVSxx19C	sim: 66	Very Wide	sim: 88 %	sim: 0.830	-
LH351A(3535)	sim: 45	Very Wide	sim: 88 %	sim: 1.518	-

Relative intensity of C13413_ANNA-WW_(NF2x757A)



D

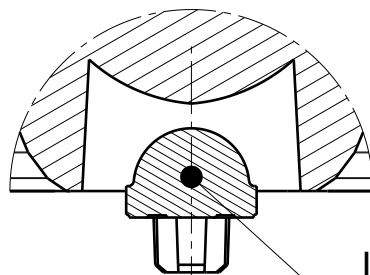
C

B

A

4

4



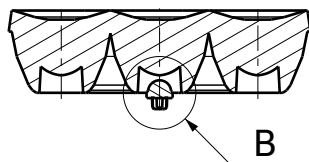
LED (XT-E)

Detail B

Scale: 5:1

3

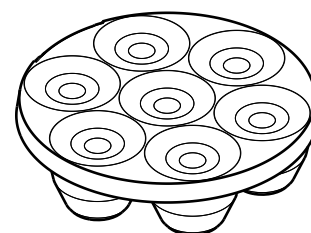
3



B

Section view A-A

Scale: 1:1

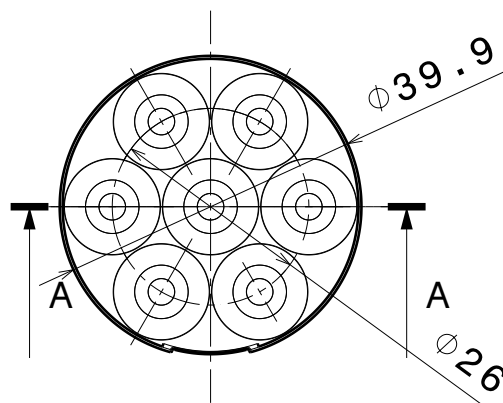
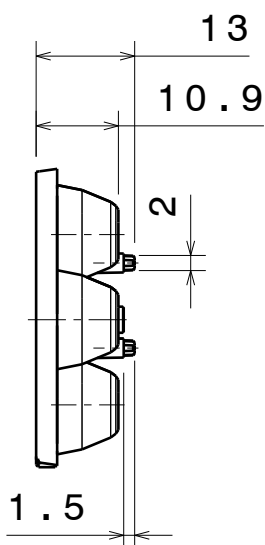


Isometric view

Scale: 1:1

2

2



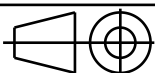
INDEX	PART NO	DESCRIPTION	MATERIAL	COLOUR
1	ANNA-40-7-WW		PMMA	

Tolerances if not otherwise shown
According to DIN ISO 2768-1
Linear measures:
Up to 30mm class M, otherwise class C.
According to DIN ISO 2768-2
Form and position: class L

LEDiL

Ledil Oy
Salorankatu 10
FIN 24240 SALO
Finland

THIRD ANGLE PROJECTION:



DRAWING TITLE

ANNA-40-7-WW

This drawing is the property
of LEDiL Oy. It may not be
reproduced, copied or
communicated without a written
agreement with LEDiL Oy."

SIZE PART NUMBER

A4

-

SCALE	1:1	WEIGHT	9,34 g	SHEET	1/1
-------	-----	--------	--------	-------	-----

D

A

1

NOTE: The typical divergence will be changed by different color, chip size and chip position tolerance. The typical total divergence is the full angle measured where the luminous intensity is half of the peak value.