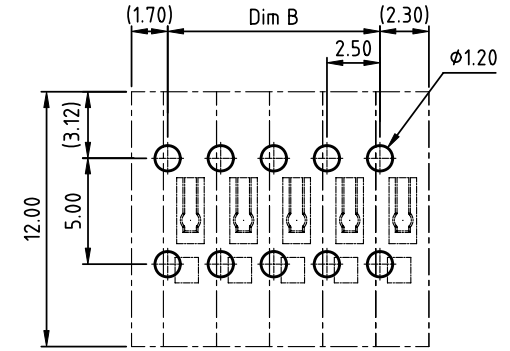
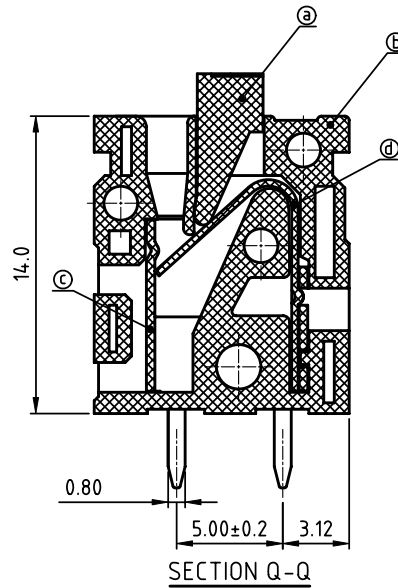
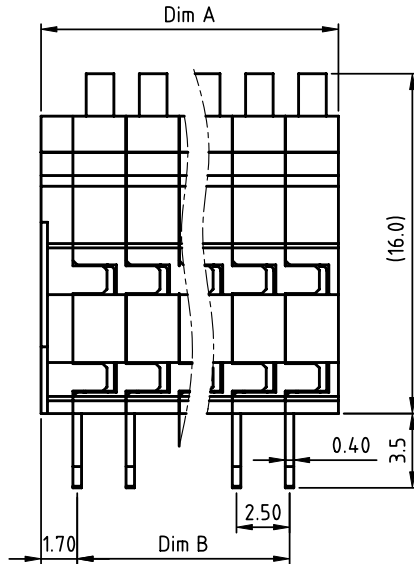
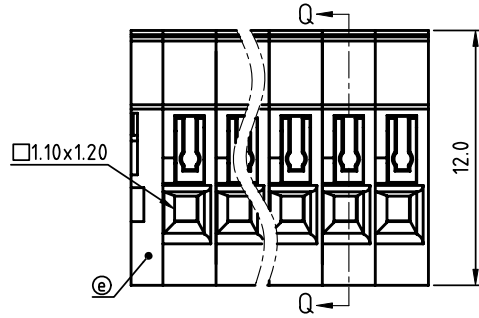


PRODUCT NUMBER	PITCH
NAxxB0x000J0G	2.50 mm



RECOMMENDED P.C.B LAYOUT
TOP VIEW

Material:

- Item①Terminal lever:Thermoplastic(UL94 V-0)
- Item②Terminal body Thermoplastic(UL94 V-0)
- Item③Solder pin: Brass Tin plated
- Item④wire guard: Stainless steel
- Item⑤Terminal cover:Thermoplastic(UL94 V-0)

Electrical cULus

- Voltage rating: 150V
- Current rating: 3A
- Wire range: 0.08-0.52mm²
- Solid wire(AWG): 20-28
- Stranded wire(AWG): 20-28
- Wire strip length: 9-10mm
- Withstanding Voltage: 1.3KV
- Operating temperature: -40°C to +115°C
- Soldering temperature: 260°C±5°C/5 Sec
- Safety Approval:

PART NO.: NA xx B0 x 0 00J0 G

N=Number of poles
Dim A=Nx2.5+1.5
Dim B=(N-1)x2.5

Poles	Tolerance
2-6p	±0.20
7-12p	±0.25
13-24p	±0.30

End stackable	No. of poles	Color	RoHS compliant
0	2	Black (RAL9005)	RoHS compliant (lead<4%) In copper Alloy
02	2 poles	Red (RAL3001/D)	
03	3 poles	Orange(RAL2011/P)	
...	...	Yellow(RAL1018/A)	
...	...	Green(RAL6018/T)	
24	24 poles	Blue (RAL5015/A)	
		8 Grey(RAL7004/P)	
		9 White(RAL1102)	
		C Multiple colors	

mat'l. code		surface ASME Y14.5	tolerance ASME Y14.5	projection 	product family TERMINAL BLOCK
ltr	ecn no	dr	date	tolerances unless otherwise specified	title TERMINAL BLOCK
				angles X±0.5	
				fillet X.X±0.3	scale MM
				X*±1° X.XX±0.1	dwg no NAXxB0x000J0G
		dr	EVIN ZHONG	052314	sheet 1 of 1
		enr	EVIN ZHONG	052314	size A4
		chr	HANKE FENG	052314	type CUSTOMER Drawing
		appd	SHI JUN	052314	
sheet index	revision sheet	A	1		